

DCT6 Series

Dukane Collaboration Table



Devices and monitor not included.



Collaboration can mean different things to different people. We believe it's all about working together to create something. The Dukane Collaboration Table gives you a functional place to work together as a team. Multimedia integration allows you to present, share and create in today's digital world. Our table is flexible and fits nicely in classrooms, conference rooms, training rooms or any shared meeting space. If you are looking for an affordable table for your huddle space that is capable of the most innovative technology the Dukane Collaboration Table is the perfect solution.

Features

- 6' peninsula table accommodates four people comfortably
- Adjustable height braced legs offer exceptional stability
- Made of scratch and impact-resistant high-pressure, one-piece laminate work-surface
- Durable powder coated steel chassis provides a long-lasting finish
- Glides and casters included for easy movement
- Included flat panel mount accommodates up to 55" display
- Included power module for charging and AV cable access
- Included power strip with USB charging capability
- Included trough for easy cable management
- Table also available with equipment storage compartment
- Optional under table shelves available
- Optional video conferencing camera shelf and flat panel mount shelf available



The included flat panel display table mount accommodates up to a 55" display.



The included table power module features two (2) AC outlets and two (2) USB plugs for charging your devices. Built-in cable access hole deters the removal of AV cables.

DUKANE CORP

Audio Visual Products
2900 Dukane Drive, St. Charles, Illinois 60174
Toll-free: 888-245-1966 • Fax: 630-584-5156
E-mail: avsales@dukane.com
www.dukaneav.com



DCT6 Series



DCT6
Full length cable trough

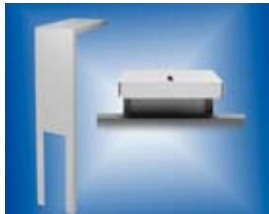


DCTS6
Cable trough and compartment

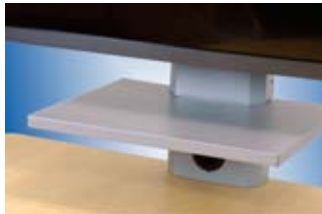
Storage Compartment:
20" x 16" x 8"

Choose the DCT6 with full length cable trough or the DCTS6 with trough and equipment storage compartment.

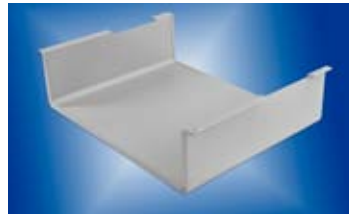
DCTCM Camera Mount



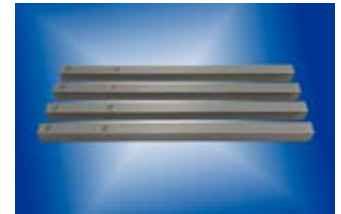
DCTMS Panel Mount Shelf



DCTUS Under Table Shelf



DCTSL Leg Extensions



Choose the optional accessories below to meet your specific integration needs.

Dukane is a proud distributor of a full line of collaboration products including flat panel displays, presentation systems and video conferencing products. Call to speak to one of our expert sales consultants for more information.



Included	Integrated power module
	Power strip with USB
	Power cord, USB cords
	Flat panel table mount
	All necessary hardware
Optional Accessories	Camera Mount (DCTCM)
	Flat Panel Mount (DCTMS)
	Under Table Shelve (DCTUS)
	Leg Extensions (DCTSL)

Weight & Dimensions	DCT6	DCTS6
Dimensions (L x W x H)	72" x 48" x 60-66"	72" x 48" x 60-66"
Weight	180 lbs.	200 lbs.
Shipping Dimensions	80" x 48" x 18"	80" x 48" x 20"
Shipping Weight	255 lbs.	265 lbs.

Custom table configurations available. Call for details.

**LIFETIME/7
WARRANTY**