

Easy to use installation projector with advanced features, 6,500 ANSI lumens brightness and WXGA 1280 x 800 resolution in a low profile design.



Key Features

- WXGA resolution and 6,500 lumens white/color output
- Accentualizer - advanced image processing
- Picture by Picture and Picture in Picture
- Two speed motorized zoom, focus and lens shift control
- HDMI 2 inputs
- 2,500 hours lamp life (Eco mode)*
- 20,000 hours hybrid filter**
- 360° display rotation

DUKANE CORP.

Audio Visual Products
2900 Dukane Drive, St. Charles, Illinois 60174
Toll-free: 888-245-1966 • Fax: 630-584-5156
E-mail: avsales@dukane.com
www.dukaneav.com



8978W

Dukane's installation-friendly 8978W LCD projector is designed to provide maximum presentation impact in mid to large venue applications. It offers a versatile array of innovative, performance-enhancing features along with advanced video display technology providing bold, brilliant colors with incredible image clarity and uniformity. Plus, with motorized zoom, focus and superior lens shift, and a variety of lens options, the 8978W is at the top of its class when it comes to installation flexibility. With a tough magnesium die cast body, the 8978W is one of the most durable projectors available today. All this, and with a lower cost of ownership. For added peace of mind, Dukane's 8978W is also backed by a generous warranty and our world-class service and support programs.

8978W LCD Projector

DUKANE

Quality, reliability and installation convenience.

From mid-size to very large auditoriums and conference halls, Dukane's 8978W LCD projector is the perfect solution. With 6,500 ANSI lumens brightness and WXGA 1280 x 800 resolution, the 8978W will deliver dynamic images guaranteed to dazzle any audience. Incorporating Dukane's leading-edge technology, the 8978W features Dukane's Accentualizer for advanced image processing, long lamp life, a variety of lens options to accommodate your specific application, and is wireless presentation



compatible. Plus, embedded networking gives you the ability to manage and control multiple projectors over your LAN (scheduling of events, centralized reporting, image transfer, and e-mail alerts). Even with the array of advanced features, Dukane's 8978W is designed for user-friendly operation and installation convenience.

UNIQUE FEATURES

Accentualizer

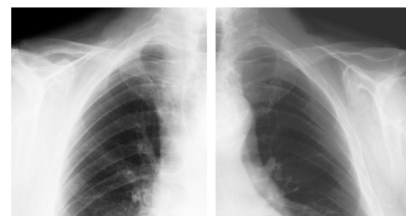
Dukane original technology makes pictures look more real by enhancing sharpness, gloss and shade to make pictures as clear as pictures on a flat-panel device. You can also adjust the effects by three levels according to your surroundings so that the colors of projected images are the actual colors of the objects they represent.



DICOM® Simulation Mode

The DICOM (Digital Imaging and Communications in Medicine) Simulation Mode projects grayscale images which approximate DICOM Part 14 specifications. This mode is ideal for viewing grayscale medical images, such as X-rays, for training and educational purposes.

The projectors have a DICOM (Digital Imaging and Communications in Medicine) Simulation Mode. This mode simulates the DICOM standard, which is a standard applicable to digital communications in medicine, and is useful for displaying medical images such as X-rays. These projectors are not medical devices and are not compliant with the DICOM standard, and neither the projector nor the DICOM Simulation Mode should be used for medical diagnosis. Comparison photos are simulations.



Standard Mode

DICOM Simulation Mode

Multiple Lens Options

Projectors achieve a brightness of the highest class in the industry by adopting a short arc length lamp with a small F-number lens. There are a variety of lenses to use for this projector, all providing specified projector brightness! In addition to the one ML703 middle throw standard lens, six optional lenses are available: FL701 fixed, SL702 and SL712 short throw, ML713 middle throw, LL704 long throw and UL705 ultra-long throw.

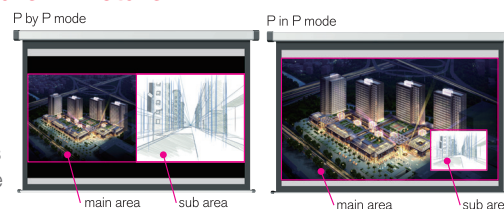


Short arc length lamp

Small F-number lens

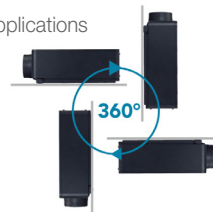
Picture by Picture and Picture in Picture

Images from two input signals at the same time. Picture by Picture (P by P) enables you to compare two images side by side. Picture in Picture (P in P) enables you to display one image within another image. These functions are handy when you need to compare two sets of data or other material.



360° Rotation

Display rotation of 360° for creative applications and greater installation flexibility.



DUKANE CORP.

Audio Visual Products
2900 Dukane Drive, St. Charles, Illinois 60174
Toll-free: 888-245-1966 • Fax: 630-584-5156
E-mail: avsales@dukane.com
www.dukaneav.com

STANDARD FEATURES

Center Lens Design: This feature makes it easy to align the projector with the center of the screen for faster and trouble-free setup.

Motorized Zoom, Focus and Lens Shift

Control: Allows for greater range of installation possibilities. With the motorized function you can make fine adjustments through the remote control or RS232/IP device.

Perfect Fit 2: Enables the user to adjust individual corners and sides independent of one another. Perfect Fit 2 provides vertical and horizontal digital correction of either barrel or pin cushion distortions. This feature helps correct geometric and complicated distortions. Perfect Fit 2 allows the projected image to fit correctly to the screen quickly and easily.

Projector Quick Connection App For Mobile Devices:

Our iOS application offers full projector control and also provides the capability to display photos, document files and web site contents. Available for iPad®, iPhone® and Android devices. Works over your LAN via your RJ-45 port or via an optional USBWL11N wireless adapter.

Status Monitor: With Dukane's status monitor, you'll have access in real time to projector diagnostics. Status updates include configuration information, maintenance history, as well as error and alarm messaging. For even greater user convenience, the status monitor can be accessed on the rear input panel or through the Dukane network tools software.

Wired and Wireless Switcher Solutions:

Multifunction switcher operates in conjunction with the receiver to provide expanded source selection and switching options for connected devices. The switcher is sold as an optional accessory that can provide 1080p 30 fps wireless via WHDI for both video and audio.

Network Control, Maintenance and Security:

Embedded networking gives you the ability to manage and control multiple projectors over your LAN. Features include scheduling of events, centralized reporting, image transfer and e-mail alerts for reactive and routine maintenance.

PC-Less Presentation: By using a USB memory stick or other storage device, you can use the projector without a computer. Menus are easy to see with a thumbnail display. Additionally there is also a slideshow function.

PJMessenger: PJMessenger function allows you to send and display text messages and audio alerts on your networked projectors. It is an easy and efficient way to send announcements out to multiple units.

Wireless Presentation Compatible: Connect the projector to a computer or your network using the optional USB wireless adapter (part number USBWL11N). The adapter supports IEEE802.11b/g and the latest 11n.



Front 3/4 View



Top View

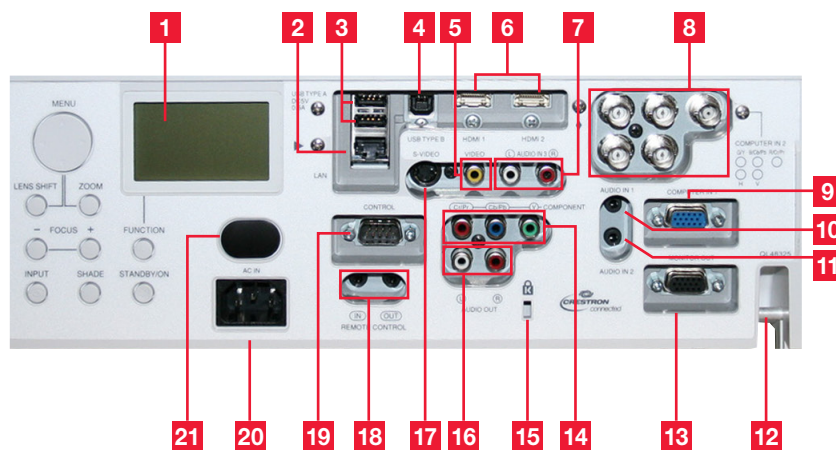


Side Profile



Rear View

Input/Outputs



- | | | |
|--------------------|------------------|-----------------------|
| 1. Status Monitor | 8. Computer in 2 | 15. Kensington Lock |
| 2. LAN | 9. Computer in 1 | 16. Audio Out |
| 3. USB Type A x 2 | 10. Audio in 1 | 17. S-Video |
| 4. USB Type B | 11. Audio in 2 | 18. Remote Control |
| 5. Composite Video | 12. Security Bar | 19. Control (RS-232C) |
| 6. HDMI x 2 | 13. Monitor Out | 20. AC Inlet |
| 7. Audio in 3 | 14. Component | 21. Remote Sensor |

DUKANE CORP.

Audio Visual Products
2900 Dukane Drive, St. Charles, Illinois 60174
Toll-free: 888-245-1966 • Fax: 630-584-5156
E-mail: avsales@dukane.com
www.dukaneav.com

8978W

8978W LCD Projector



Accessories and Lenses

Supplied Accessories	Remote control, power cord, computer cable, one standard ML703 lens, lens cover, security label, adapter cover
Optional Accessories	USBWL11N USB wireless adapter, MS-1 wired multifunction switcher, MS-1WL wireless multifunction switcher
Optional Lenses	6 optional lenses are available: FL701, SL702, SL712, ML713, LL704, UL705
Replacement Parts	
Lamp	456-8977
Remote Control	HL02801
Filter	UX38242

Projection Throw Chart

Screen Size 16:10		Throw Distance	
Diagonal	Width	Min	Max
30	25	39	78
80	68	104	206
100	85	129	257
150	127	194	385
200	170	259	513
250	212	323	641
300	254	388	769
600	509	775	1537

Throw Ratio: 1.5 - 3.0 : 1 (distance : width)
Screen size and throw distance are measured in inches with standard lens ML703.

Projection Lens Chart

Lens	Inches	Meters
ML703	129 - 257	3.3 - 6.5
FL701	71	1.8
SL702	102 - 154	2.6 - 3.9
SL712	102 - 154	2.6 - 3.9
ML713	148 - 250	3.8 - 6.4
LL704	244 - 415	6.2 - 10.5
UL705	415 - 705	10.5 - 17.9

Projection distances measured in inches and meters with standard lens and optional lenses when projecting onto a 100" diagonal screen.



DUKANE CORP.

Audio Visual Products
2900 Dukane Drive, St. Charles, Illinois 60174
Toll-free: 888-245-1966 • Fax: 630-584-5156
E-mail: avsales@dukane.com
www.dukaneav.com

Specifications

Display	Projection Technology	3LCD, 3 chip technology
	Resolution	WXGA 1280 x 800
	White Light Output	6,500 ANSI lumens
	Color Light Output	6,500 ANSI lumens
	Colors	16.7 million colors
	Aspect Ratio	Native 16:10 / 4:3 and 16:9 compatible
Lens & Operation	Contrast Ratio	3,000 : 1 (using active IRIS)
	Throw Ratio (distance : width)	1.5 - 3.0:1 (with standard lens)
	Lens	f = 24 - 48 mm (with standard lens) x 2.0 motorized zoom, focus & lens shift
	Lamp Wattage	365W
	Expected Lamp Life*	Approximately 2,000 hours (standard mode) 2,500 hours (Eco mode)
	Expected Filter Life**	Approximately 20,000 hours
Compatibility	Speaker Output	N/A
	Acoustic Noise Level	39 dB (33 dB in Eco mode)
	Keystone	H and V: +/- 35° with standard lens
	Computer	VGA, SVGA, XGA, WXGA/WXGA+/SXGA/SXGA+/UXGA (compressed), MAC 16"
	H-Sync	31.5 kHz - 106 kHz
	V-Sync	56 Hz - 120 Hz
Connectors	Composite Video	NTSC, NTSC4.43, PAL, PAL-M, -N, SECAM
	Component Video	480i, 480p, 576i, 720p, 1080i, 1080p
	HDMI	480i, 480p, 576i, 720p, 1080i, 1080p, Computer signal TMDS Clock 27 MHz - 150 MHz
	Digital Input	HDMI x 2 (HDCP compliant)
	Computer Input 1	15-pin mini D-sub x 1
	Computer Input 2	BNC x 5
Ratings & Warranty	Computer Monitor Output	15-pin mini D-sub x 1
	Video Input	
	S-Video	Mini DIN 4-pin x 1
	Composite Video	RCA jack x 1
	Component Video	RCA jack x 3, 15-pin mini D-sub x 1 (shared with computer In 1) BNC x 3 (shared with computer In 2)
	Audio Input	3.5 mm stereo mini jack x 2, RCA jack (L/R) x 1
Ratings & Warranty	Audio Output	RCA jack (L/R) x 1
	Network LAN Wired	RJ-45 port (10 base-T / 100 base-TX)
	Network LAN Wireless	USB-A, IEEE802.11 b/g/n - optional wireless adapter required
	USB	Type A x 2 (PC-less presentation, wireless adapter, TB-1) Type B x 1 (USB display or mouse control)
	Wired Remote Control	3.5 mm stereo mini jack (IN/OUT)
	Control Terminals	9-pin D-sub x 1 (RS-232 control)
Ratings & Warranty	Power Supply	AC100-120V / AC220-240V, 50/60Hz
	Power Consumption	500W
	Operating Temperature	32°F - 113°F (0°C - 45°C)
	Dimensions (W x D x H)	19.6" x 15.6" x 5.3" (without lens) / Shipping 27" x 22" x 9"
	Weight	approx. 19.4 lbs. (excl. protruding parts) / Shipping 25 lbs.
	Approvals	UL 60950-1 / cUL, FCC Part 15 subpart B class A
Ratings & Warranty	Warranty	Five (5) year limited warranty plus Dukane's 1 year Peace of Mind Loaner Program
	UPC	605194002894

* Actual lamp life will vary by individual lamp and based on environmental conditions, selected operating mode, user settings and usage. Hours of average lamp life specified are not guaranteed and do not constitute part of the product or lamp warranty. Lamp brightness decreases over time.

** Actual filter life will vary by individual filter and based on environmental conditions, selected operating mode, user settings and usage. Hours of average filter life specified are not guaranteed and do not constitute part of the product warranty.



8978W