

Enhances your meetings and presentations by wirelessly mirroring high quality contents from your Miracast® compatible devices.



Key Features

- WUXGA 1920 x 1200 resolution
- 5,200 ANSI lumens white/color output
- 10,000:1 contrast ratio
- 4,000 hours lamp life (Standard mode)
6,000 hours lamp life (Eco mode)*
- 10,000 hours hybrid filter**
- Seamless Design
- Edge Blending & Warping
- HDCR / Accentualizer / Image Optimizer
- Wireless Networking Functions
- Miracast® Compatible
Projection may be unavailable depending on the device or content
- HDBaseT™
- HDMI In/Out

DUKANE CORP

Audio Visual Products
2900 Dukane Drive, St. Charles, Illinois 60174
Toll-free: 888-245-1966 • Fax: 630-584-5156
E-mail: avsales@dukane.com
www.dukane.com/av

The 8962WUM combines WUXGA 1920 x 1200 resolution with super-bright 5,200 ANSI lumens white/color light output for a stunning visual achievement. It can transform classrooms, lecture halls, and auditoriums into true learning centers. The 8962WUM enhances meetings and presentations by wirelessly mirroring high quality contents from your Miracast® compatible devices. Incorporating Dukane's leading-edge technology, the 8962WUM features an image-enhancing combination of Accentualizer, High Dynamic Contrast Range (HDCR) and Image Optimizer, all of which contribute to the overall visual experience. Plus, Dukane's Intelligent Eco and Saver Modes with ImageCare combines optimal picture performance with maximum energy savings for a lower cost of ownership. For added peace of mind, Dukane's 8962WUM is also backed by a generous warranty and our world-class service and support programs.



8962WUM



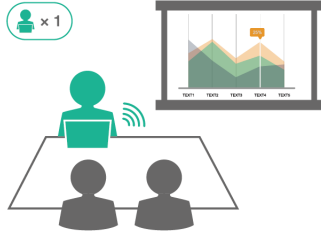
UNIQUE FEATURES

Various Network Projection Modes

Network projection supports the single display and multi display. In addition, you can manage various meetings with the moderator control mode. Connection methods for your device and projector include Miracast connection or application connection.

Single Display Projection

Mirror your device's screen on the projector screen.



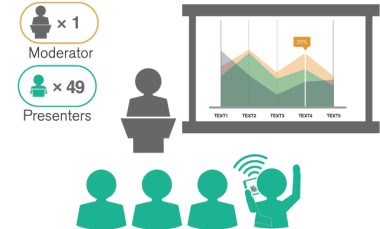
Multi Display Projection

You can split the screen into 4 parts and simultaneously project contents from up to 4 smartphones, tablets, or PCs.



Moderator Control Projection

The moderator decides who can display content. (up to 50 participants supported)



*** Use the projector in infrastructure mode with multiple access points. The projector may not operate correctly depending on the environment it is installed or network system. Miracast connection is up to 5 participants supported.

Accentualizer

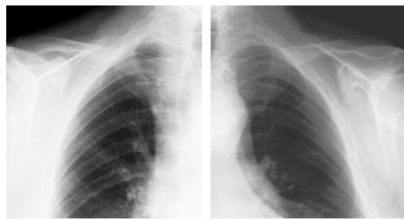
Dukane original technology makes pictures look more real by enhancing sharpness, gloss and shade to make pictures as clear as pictures on a flat-panel device. You can also adjust the effects by three levels according to your surroundings so that the colors of projected images are the actual colors of the objects they represent.



DICOM® Simulation Mode

The DICOM (Digital Imaging and Communications in Medicine) Simulation Mode projects grayscale images which approximate DICOM Part 14 specifications. This mode is ideal for viewing grayscale medical images, such as X-rays, for training and educational purposes.

The projectors have a DICOM (Digital Imaging and Communications in Medicine) Simulation Mode. This mode simulates the DICOM standard, which is a standard applicable to digital communications in medicine, and is useful for displaying medical images such as X-rays. These projectors are not medical devices and are not compliant with the DICOM standard, and neither the projector nor the DICOM Simulation Mode should be used for medical diagnosis. Comparison photos are simulations.



Standard Mode

DICOM Simulation Mode

Edge Blending

Projectors are equipped with the Edge Blending function that achieves the seamless projection of one image using multiple projectors. The 5000 series comes with various blending functions that meet the level users are looking for.

Instant blending: Easily perform blending processing without the use of any special equipment.



Instant Blending

DUKANE CORP

Audio Visual Products
2900 Dukane Drive, St. Charles, Illinois 60174
Toll-free: 888-245-1966 • Fax: 630-584-5156
E-mail: avsales@dukane.com
www.dukane.com/av

HDCR (High Dynamic Contrast Range)

When average projectors are used in bright rooms, the darker colors of an image deteriorate and images become unclear. Using this function, blurred images caused by room lighting or outside light sources are corrected, and an effect similar to increasing contrast occurs. This results in clear images even in bright rooms.



Image Optimizer

The Image Optimizer automatically adjusts HDCR and Accentualizer to improve visibility as lamp brightness dims over time.



MHL™

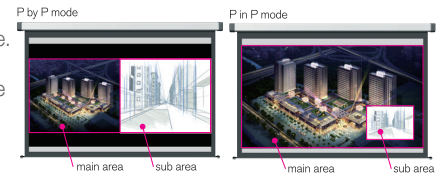
MHL (Mobile High-Definition) allows users to mirror their phone/tablet screen with the projector display. It is compatible with any and all apps.



Picture by Picture and Picture in Picture

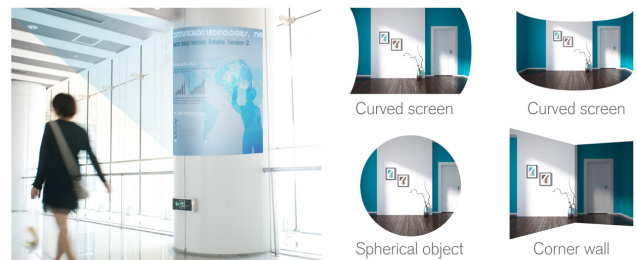
Images from two input signals at the same time. Picture by Picture (P by P) enables you to compare two images side by side. Picture in Picture (P in P) enables you to display one image within another image.

These functions are handy when you need to compare two sets of data or other material.



Warping

Warping is possible from your computer by using the specialized application. Projection is possible on spherical surfaces and surfaces with corners, as well as conventional flat screens.



Curved screen

Curved screen

Spherical object

Corner wall

STANDARD FEATURES

Easily Stackable: Using the lens shift and the perfect fit you can easily stack two units for two times the light output.

V/H Lens Shift: For ease of installation, V/H Lens Shift allows you to move the image without having to physically move the projector

HDMI-Out: When sharing content on multiple screens by multiple projectors, HDMI-Out is used to bring the content signal from one projector to another.

Network Control, Maintenance and Security: Embedded networking gives you the ability to manage and control multiple projectors over your LAN. Features include scheduling of events, centralized reporting, image transfer and e-mail alerts for reactive and routine maintenance.

Perfect Fit: Enables the user to adjust individual corners and sides independent of one another. Perfect Fit provides vertical and horizontal digital correction of either barrel or pin cushion distortions. This feature helps correct geometric and complicated distortions. Perfect Fit allows the projected image to fit correctly to the screen quickly and easily.

Picture Shift: Enables the user to fit or align contents to the screen by shifting the content area vertically.

PJMessenger: PJMessenger function allows you to send and display text messages and audio alerts on your networked projectors. It is an easy and efficient way to send announcements out to multiple units.

Live Viewer Pro for Mobile Device: Our iOS application offers full projector control and also provides the capability to display photos, document files and web site contents. Available for iPad®, iPhone® and Android devices. Works over your LAN via your RJ-45 port or via a USBWL5G wireless adapter.

Wireless Presentation Compatible: Connect the projector to a computer or your network using USBWL5G wireless adapter. The adapter supports IEEE802.11 a/b/g/n/ac.



Front View



Top View



Rear View

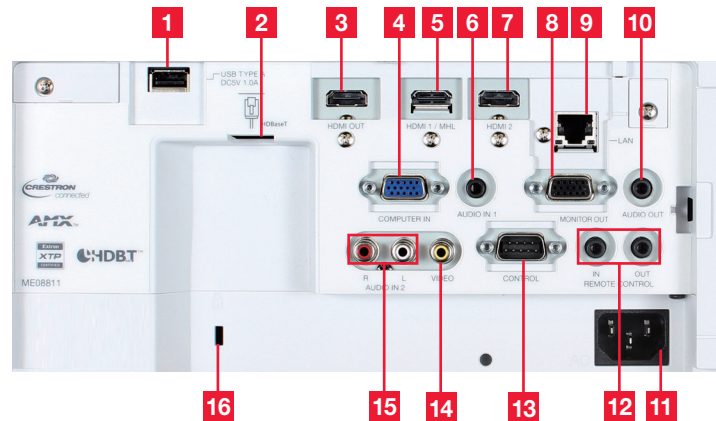


Ceiling Mount Left



Ceiling Mount Right

Input/Outputs



- | | | |
|--------------------------------------|----------------|---------------------------|
| 1. USB Type A (for firmware upgrade) | 6. Audio In 1 | 12. Remote Control In/Out |
| 2. HDBaseT | 7. HDMI 2 | 13. Control (RS-232C) |
| 3. HDMI Out | 8. Monitor Out | 14. Video |
| 4. Computer In | 9. LAN | 15. Audio In 2 |
| 5. HDMI 1 / MHL | 10. Audio Out | 16. Kensington Lock |
| | 11. AC Power | |

8962WUM

DUKANE CORP

Audio Visual Products
 2900 Dukane Drive, St. Charles, Illinois 60174
 Toll-free: 888-245-1966 • Fax: 630-584-5156
 E-mail: avsales@dukane.com
 www.dukane.com/av

Accessories and Lenses

Supplied Accessories	Remote control, power cord, computer cable, wireless adapter, security label, AA batteries x 2, terminal cover, HDMI cable holder x 3, cable tie x 3, cable tie for power cord, hook metal, screw, lens cover
Optional Accessories	Wired remote HL03131
Replacement Parts	
Lamp	456-8960W
Remote Control	HL03037
Filter	UX41161

Projection Throw Chart (In inches)

Screen Size 16:10	Throw Distance		
	Diagonal	Width	Min
30	25	33	58
60	51	68	118
80	68	91	158
100	85	115	198
200	170	231	397
300	254	348	597

Throw Ratio: 1.4 - 2.3 :1 (distance : width)

Specifications

Display	Projection Technology	3LCD, 3 chip technology
	Resolution	WUXGA 1920 x 1200
	White Light Output	5,200 ANSI lumens
	Color Light Output	5,200 ANSI lumens
	Colors	1.07 billion colors (HDMI/HDBaseT/Computer/Video input with Frame Lock on)
	Aspect Ratio	Native 16:10 / 4:3, 14:9, 16:9 and Zoom compatible
	Contrast Ratio	10,000 : 1 (using active IRIS)
Lens & Operation	Throw Ratio (distance : width)	1.4 - 2.3 : 1
	Focus Distance	31" - 597"
	Display Size	30" - 300"
	Lens	f = 19.8 - 33.9, x 1.7 manual zoom, focus and lens shift
	Lamp Wattage	300W
	Expected Lamp Life*	Approximately 4,000 hours (Standard mode) 6,000 hours (Eco mode)
	Expected Filter Life**	Approximately 10,000 hours
Compatibility	Speaker Output	16W
	Keystone	H and V: +/- 30°
	Computer	VGA, SVGA, XGA, WXGA/WXGA+/WXGA++, SXGA/SXGA+, UXGA, WUXGA, Mac16"
	H-Sync	15 kHz - 106 kHz
	V-Sync	50 Hz - 120 Hz
	Composite Video	NTSC, NTSC4.43, PAL, PAL-M, -N, SECAM
	Component Video	480i, 480p, 576i, 576p, 720p, 1080i, 1080p
Connectors	HDMI & HDBaseT	480i, 480p, 576i, 576p, 720p, 1080i, 1080p Computer signals TMDS clock 25 MHz -162 MHz
	MHL	480i, 480p, 576i, 576p, 720p, 1080i, 1080p Computer signals TMDS clock 25 MHz -75 MHz
	Digital Input	HDBaseT x 1, HDMI x 1, HDMI/MHL x 1
	HDMI Output	HDMI x 1
	Computer Input 1	15-pin mini D-sub x 1
	Computer Monitor Output	15-pin mini D-sub x 1
	Video Input	
Ratings & Warranty	Composite Video	RCA jack x 1
	Component Video	15-pin mini D-sub x 1 (shared with computer input)
	Audio Input	3.5 mm stereo mini jack x 1, RCA jack (L/R) x 1
	Audio Output	3.5 mm stereo mini jack x 1
	Network (LAN) Wired	RJ-45 port (10 base-T / 100 base-TX)
	Network (LAN) Wireless	USB-A, IEEE802.11 a/b/g/n/ac (with USB-WL-5G)
	HDBaseT	RJ-45 port x 1
Ratings & Warranty	USB	Type A x 1 for wireless adapter (behind the filter cover) Type A x 1 for firmware upgrade
	Wired Remote Control	3.5 mm stereo mini jack x 1
	Control Terminals	9-pin D-sub x 1 (RS-232 control)
	Power Supply	AC 100-120V/220-240V, 50/60Hz
	Power Consumption	470W / 450W
	Operating Temperature	32°F - 95°F (0°C-35°C) (Standard mode) 32°F - 104°F (0°C-40°C) (Eco mode)
	Dimensions (W x D x H)	18.1" x 13.1" x 5.4" (excluding protruding parts) Shipping 23" x 19" x 10"
Ratings & Warranty	Weight	Approximately 16 lbs. / Shipping 19 lbs.
	Approvals	UL 60950-1 / cUL, FCC Part 15 subpart B class A
	Warranty	Five (5) year limited warranty plus Dukane's 1 year Peace of Mind Loaner Program
	UPC	605194006663

* Actual lamp life will vary by individual lamp and based on environmental conditions, selected operating mode, user settings and usage. Hours of average lamp life specified are not guaranteed and do not constitute part of the product or lamp warranty. Lamp brightness decreases over time.
** Actual filter life will vary by individual filter and based on environmental conditions, selected operating mode, user settings and usage. Hours of average filter life specified are not guaranteed and do not constitute part of the product warranty.



DUKANE CORP

Audio Visual Products
2900 Dukane Drive, St. Charles, Illinois 60174
Toll-free: 888-245-1966 • Fax: 630-584-5156
E-mail: avsales@dukane.com
www.dukane.com/av

