

Fully featured ultra short throw LCD projector with network capabilities and a low operating cost all in a portable design.



## Key Features

- XGA 1024 x 768 resolution
- 3,500 ANSI lumens white/color output
- 4000:1 contrast ratio
- 4,000 hours hybrid filter\*
- 2,500 hours lamp life (Standard mode) and 4,000 hours lamp life (Eco mode)\*\*
- ImageCare technology
- Wireless compatible

Dukane's 8115 ultra short throw LCD projector combines an array of advanced features in a compact, portable design perfectly suited for classrooms of any size. Small in size, but big on performance, the 8115 provides vibrant image quality, cost-effective operation, and long-lasting reliability. The 8115 incorporates a cloning function which enables you to copy configuration settings from one projector to others of the same model via USB memory. Plus, Dukane's Intelligent Eco Mode with ImageCare combines optimal picture performance with energy savings for a lower total cost of ownership. For added peace of mind, Dukane's 8115 is also backed by a generous warranty and our world-class service and support programs.

## DUKANE CORP

Audio Visual Products  
2900 Dukane Drive, St. Charles, Illinois 60174  
Toll-free: 888-245-1966 • Fax: 630-584-5156  
E-mail: [avsales@dukane.com](mailto:avsales@dukane.com)  
[www.dukane.com/av](http://www.dukane.com/av)



# 8115

## UNIQUE FEATURES

### Drawing Function with Optional Tablet (TB-1)



The optional Dukane wireless tablet and pen allows you to engage your audience by annotating over images shown on the projector.

### Cloning Function



Copy configuration settings from one projector to others of the same model via USB memory. Cloning can save almost all PJ settings such as gamma and keystone via USB memory.

### ImageCare Technology



ImageCare is a lamp power control function that combines optimal picture performance with maximum energy savings by decreasing energy usage, improving contrast ratio and lengthening lamp life. The result is a lower total cost of ownership and decreased maintenance cost.

### Intelligent Eco and Saver Modes



Automatically changes the brightness of the lamp according to the brightness level of the screen. Also, automatically changes the brightness of the lamp if there is no change in the screen image. Using ImageCare technology, these features give optimal picture performance with maximum energy savings.

### Tabletop Presentation



Make any tabletop a projection screen using the optional tabletop stand. Ideal for a small group environment or in a room with limited space.

## STANDARD FEATURES

### Display via USB



Simply plug and play using the USB port instead of the 15-pin D-sub VGA cable.

### Input Source Naming



Users can name input sources in simple language instead of factory default name.

### Microphone Input



A microphone can be used via the jack located on the input panel. Allows for more dynamic presentations even in standby mode.

### Network Control, Maintenance and Security



Embedded networking gives you the ability to manage and control multiple projectors over your LAN. Features include scheduling of events, centralized reporting, image transfer and e-mail alerts for reactive and routine maintenance.

### PC-Less Presentation



By using a USB memory stick or other storage device, you can use the projector without a computer. Menus are easy to see with a thumbnail display. Additionally there is also a slideshow function.

### PIN Lock / MyScreen / MyText



PIN lock protection can limit projector users. MyScreen PIN lock keeps captured images on the startup screen. Users can set any name logo to MyScreen, clearly identifying ownership. MyText provides the ability to write text on the startup screen such as model name, serial number or location.

### PJMessenger



PJMessenger function allows you to send and display text messages and audio alerts on your networked projectors. It is an easy and efficient way to send announcements out to multiple units.

### Present Content via LAN



Dukane's suite of networking software allows you to easily send content directly from your PC to the projector via your LAN connection.

### Serial Number and Media Access Control Label



A label is affixed to the front of the projector to more easily access and read the model name and serial number while mounted in ceiling use. This is a convenience for installers, end user and auditors for instant accessibility.

### Template Function



Line templates in the projector menu can help when writing on a whiteboard. There are four types of line templates to choose from.

### Wireless Presentation Ready



You can use a wireless network by connecting the projector to a computer using the optional USB wireless adapter part number USBWL11N. The adapter supports IEEE802.11b/g and the latest 11n.

## DUKANE CORP

Audio Visual Products  
2900 Dukane Drive, St. Charles, Illinois 60174  
Toll-free: 888-245-1966 • Fax: 630-584-5156  
E-mail: avsales@dukane.com  
www.dukane.com/av

\* Actual filter life will vary by individual filter and based on environmental conditions, selected operating mode, user settings and usage. Hours of average filter life specified are not guaranteed and do not constitute part of the product warranty.  
\*\* Actual lamp life will vary by individual lamp and based on environmental conditions, selected operating mode, user settings and usage. Hours of average lamp life specified are not guaranteed and do not constitute part of the product or lamp warranty. Lamp brightness decreases over time.

# 8115 LCD Projector



## Enhance the educational experience with Dukane's 8115.

The 8115 ultra short throw LCD projector from Dukane is specifically designed to enhance the educational experience – for students and teachers. Leading edge projector technology helps stimulate the imagination of students of all ages and makes lessons become more interesting, compelling and memorable. Vivid colors. Bold graphics. Crisp text. The 8115



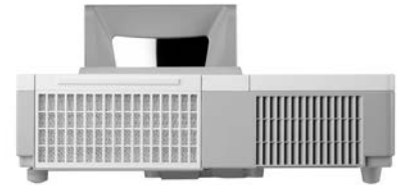
does it all in classrooms of all sizes. With 3,500 ANSI lumens brightness and XGA 1024 x 768 resolution, the 8115 provides the perfect solution. It also features a high contrast ratio, long lamp life, cloning function enabling you to copy configuration settings from one projector to others of the same model, and is wireless presentation ready. Plus, embedded networking gives you the ability to manage and control multiple projectors over your LAN (scheduling of events, centralized reporting, image transfer, and email alerts). Best of all, the high performance 8115 is exceptionally reliable and offers a lower cost of ownership.



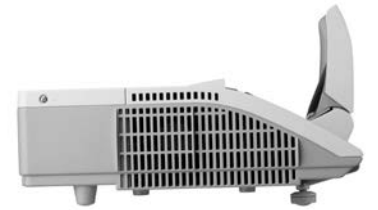
Front 3/4 View



Top View

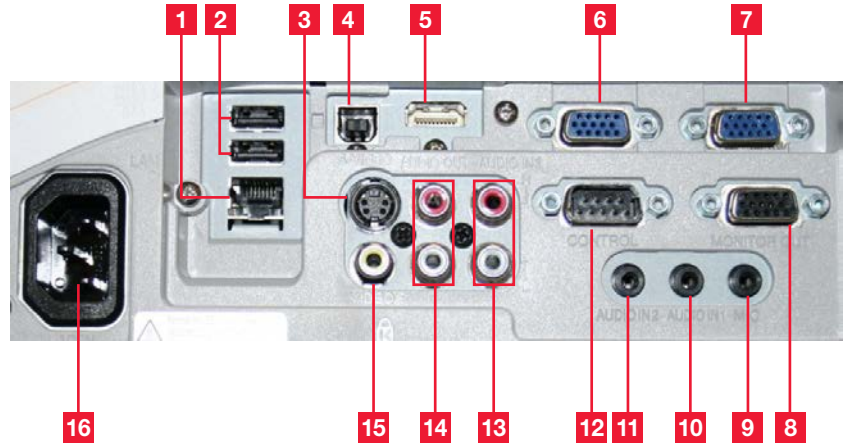


Rear View



Right Side Profile

### Input/Outputs



- |                   |                     |                       |
|-------------------|---------------------|-----------------------|
| 1. LAN            | 6. Computer in 2    | 12. Control (RS-232C) |
| 2. USB Type A x 2 | 7. Computer in 1    | 13. Audio in 3        |
| 3. S-Video        | 8. Monitor Out      | 14. Audio Out         |
| 4. USB Type B     | 9. Microphone Input | 15. Composite Video   |
| 5. HDMI           | 10. Audio in 1      | 16. AC In             |
|                   | 11. Audio in 2      |                       |



3LCD Technology



Closed Captioning



5 Year Warranty

#### DUKANE CORP

Audio Visual Products  
 2900 Dukane Drive, St. Charles, Illinois 60174  
 Toll-free: 888-245-1966 • Fax: 630-584-5156  
 E-mail: avsales@dukane.com  
 www.dukane.com/av

# 8115

## Accessories and Lenses

<b>Supplied Accessories</b>	Remote control, power cord, computer cable, user's manual, network manual
<b>Optional Accessories</b>	UST1WALLARM, A3WALLARM, TT-251 tabletop stand, USBWL11N - USB wireless adapter

## Replacement Parts

<b>Lamp</b>	456-8109W
<b>Remote Control</b>	HL02882
<b>Filter</b>	UX37191

## Projection Throw Chart (In inches)

Screen Size	4:3	
	Diagonal	Throw Distance
	Distance from leading edge of projector to screen	Distance from mirror to screen
60	3.8	15.9
70	6.3	18.4
80	8.9	20.9
90	11.4	23.4
100	13.9	26.0

Throw Ratio: (distance : width)  
 0.1 : 1 from edge of projector  
 0.3 : 1 from mirror

## Specifications

<b>Display</b>	<b>Projection Technology</b>	3LCD, 3 chip technology
	<b>Resolution</b>	XGA - 1024 x 768
	<b>White Light Output</b>	3,500 ANSI lumens
	<b>Color Light Output</b>	3,500 ANSI lumens
	<b>Colors</b>	16.7 million colors
<b>Lens &amp; Operation</b>	<b>Aspect Ratio</b>	Native 4:3 / 16:9 and 16:10 compatible
	<b>Contrast Ratio</b>	4000 : 1 (using active IRIS)
	<b>Throw Ratio</b> (distance : width)	0.1 : 1 from edge of projector to screen 0.3 : 1 from mirror to screen
	<b>Lens</b>	F = 1.8, f = 4.1 mm
	<b>Lamp Wattage</b>	215W
<b>Compatibility</b>	<b>Expected Lamp Life*</b>	Approximately 2,500 hours (standard mode) 4,000 hours (Eco mode)
	<b>Expected Filter Life**</b>	Approximately 4,000 hours
	<b>Speaker Output</b>	16W
	<b>Acoustic Noise Level</b>	37 dB (30 dB in Eco mode)
	<b>Keystone</b>	H and V: +/- 5°
<b>Connectors</b>	<b>Computer</b>	VGA, SVGA, XGA, WXGA, WXGA+/SXGA/WSXGA+/UXGA (compressed), MAC 16"
	<b>H-Sync</b>	31.5 kHz - 106 kHz
	<b>V-Sync</b>	56 Hz - 120 Hz
	<b>Composite Video</b>	NTSC, NTSC4.43, PAL, PAL-M, -N, SECAM
	<b>Component Video</b>	480i, 480p, 576i, 720p, 1080i, 1080p
<b>Ratings &amp; Warranty</b>	<b>HDMI</b>	480i, 480p, 576i, 720p, 1080i, 1080p, computer signal TMDS clock 27 MHz - 150 MHz
	<b>Digital Input</b>	HDMI x 1 (HDCP compliant)
	<b>Computer Input 1</b>	15-pin mini D-sub x 1
	<b>Computer Input 2</b>	15-pin mini D-sub x 1
	<b>Computer Monitor Output</b>	15-pin mini D-sub x 1
	<b>Video Input</b>	
	S-Video	Mini DIN 4-pin x 1
	Composite Video	RCA jack x 1
	Component Video	15-pin mini D-sub x 2, (shared with computer in 1/2)
	<b>Audio Input</b>	3.5 mm stereo mini jack x 2, RCA jack (L/R) x 1, MIC-in 3.5 mm mini jack x 1
	<b>Audio Output</b>	RCA jack (L/R) x 1
	<b>Network LAN Wired</b>	RJ-45 port (10 base-T / 100 base-TX)
	<b>Network LAN Wireless</b>	USB-A, IEEE802.11 b/g/n - optional wireless adapter required
	<b>USB</b>	Type A x 2 (PC-less presentation, wireless adapter) Type B x 1 (USB display or mouse control)
	<b>Control Terminals</b>	9-pin mini D-sub x 1 (RS-232 control)
<b>Power Supply</b>	AC100-120V / AC220-240V, 50/60Hz	
<b>Power Consumption</b>	370W	
<b>Operating Temperature</b>	32°F - 104°F (0°C - 40°C)	
<b>Dimensions (W x D x H)</b>	13.6" x 11.9" x 3.4" (excl. protruding parts) / Shipping 19" x 17" x 9"	
<b>Weight</b>	approx. 8.4 lbs. / Shipping 19 lbs.	
<b>Approvals</b>	UL 60950-1 / cUL FCC Part 15 subpart B Class B	
<b>Warranty</b>	Five (5) year limited warranty plus Dukane's 1 year Peace of Mind Loaner Program	
<b>UPC</b>	605194002870	

\* Actual lamp life will vary by individual lamp and based on environmental conditions, selected operating mode, user settings and usage. Hours of average lamp life specified are not guaranteed and do not constitute part of the product or lamp warranty. Lamp brightness decreases over time.

\*\* Actual filter life will vary by individual filter and based on environmental conditions, selected operating mode, user settings and usage. Hours of average filter life specified are not guaranteed and do not constitute part of the product warranty.

# 8115

## DUKANE CORP

Audio Visual Products  
 2900 Dukane Drive, St. Charles, Illinois 60174  
 Toll-free: 888-245-1966 • Fax: 630-584-5156  
 E-mail: avsales@dukane.com  
 www.dukane.com/av