

Preliminary

DUKANE

Professional Installation Projectors



Powerful installation projectors with laser-phosphor light source supports new, demanding projection applications.

Laser Light Module

- 20,000-plus hours of virtually maintenance-free operation
- High-brightness, lower power consumption enhances applications such as retail, digital signage and theme parks
- Ability to control brightness creating a stable image over longer time periods

Integrated and Powerful

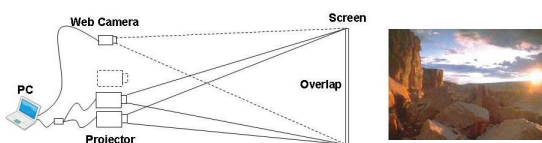
- Project uncompressed FHD video with integrated HDBaseT
- High performance video processing/scaling creates life-like images
- Integrated software applications such as DisplayNote®, Crestron Roomview, AMX Beacon and PJ Link allow for complete interactivity and control

Flexible

- Enjoy greater installation flexibility with a complete line of optional bayonet style lenses (8) for quick and easy exchange. Lens throw distances range from 1.6 to 182.9 ft
- Tilt-free installation capabilities make these projector ideal for almost any install environment, including portrait orientation
- +50%/-30% vertical lens shift and +20%/-10% horizontal lens shift capabilities make alignment easy

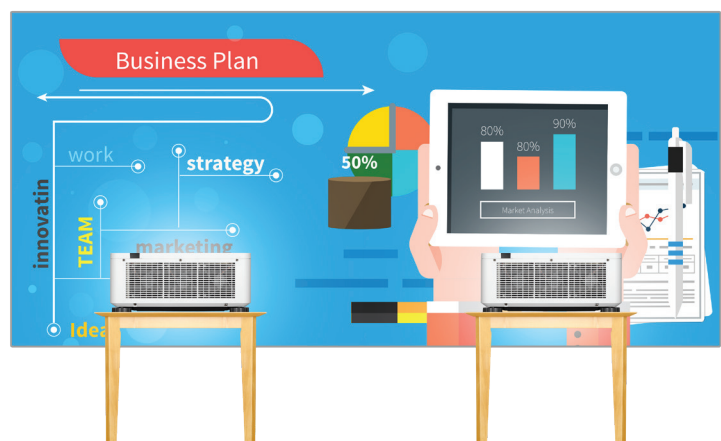
Stacking correction

The industry's first built-in stacking correction capabilities (up to four projectors) allows the projectors to boost an image's brightness up to 40,000 lumens, which is ideal for larger-sized screens and environments with heavy ambient light. This feature also prevents the complete loss of an image, which can happen when using only one projector.



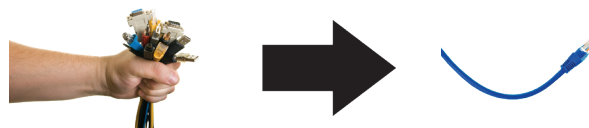
Edge blending

This function seamlessly blends multiple projected images to display a single high-resolution image.



Built-In HDBaseT Support

Simplify your installations with HDBaseT. Optimized for video applications and supporting uncompressed full HD digital video, audio, ethernet, power and various control signals. With only a single cable (up to 100m) to run, infrastructure and labor costs are reduced, installations are significantly easier, and there is no cable clutter to manage. With uncompressed HD video support, images have never been more stunning. What's more, control signals are contained in the same cable.



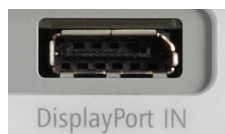
Remote control

Wired and wireless backlit remote allows you to adjust for complete control of the projectors menu structure in a well lit or dark environment. Direct controls such as lamp mode, aspect ratio, volume and input selection eliminates multiple button pushes.



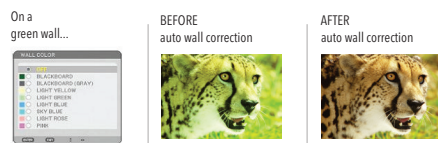
DisplayPort

Dual inputs provide the PX Series models with expanded connectivity with advanced technology.



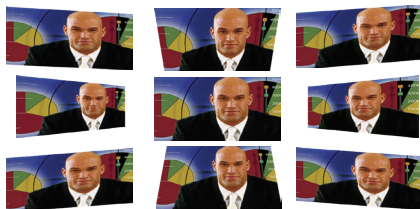
Wall color correction presets

These provide for adaptive color tone correction to display properly on non-white surfaces.



Cornerstone

Enhanced keystone correction allows for horizontal, vertical and diagonal image correction for aligned images even when the projector is set up at an angle to the screen.



3D

When combined with active shutter glasses and 3D emitter, the PX Series Projectors create 3D images from a computer or Blu-ray player. The PX Series utilize the 3D sync line output from the projector to connect to the 3D emitter. Optional 3D glasses and emitters from XPAND are available.



Geometric Correction

Projecting an image isn't confined to a standard flat screen or wall with the 68100 Series. Geometric correction allows these models to project an image on spheres, cylinders, corner angles and many more non-standard surfaces.



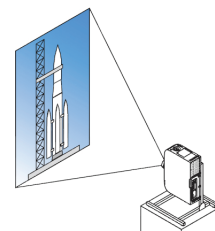
Tilt-free

The projector can be rotated freely (360°) to orient the image depending on the installation requirements



Portrait mode

Allows the projector to be rotated (and screen if necessary) to a vertical alignment so that portrait content can be viewed without black bars on the side when landscape mode is used.



UNIQUE FEATURES

3D Reform™ allows you to square the image by adjusting horizontally, vertically or diagonally when the projector cannot be placed parallel or perpendicular to the screen

Advanced AccuBlend™ ensures detailed images when non-native resolution sources are connected to the projector

AutoSense™ automatically syncs with any computer signal and features one-touch image optimization

64-step image magnification with location control

Discreet source keys for source selection

Remote diagnostics enable the user to monitor and make adjustments to the projector remotely

Built-in HTTP page for control and monitoring over a LAN network. Email notification of error messages or lamp end-of-life can be sent to remote locations.

WARRANTY

Owners receive 5 years or 20,000 hours (whichever comes first) parts and labor warranty. Also included is a first year of Dukane Peace of mind support.

IN THE BOX

Remote control, batteries, power cord, and information sheet.

ACCESSORIES

- NC1100CM** Ceiling mount
- RMT-PJ35** Replacement remote control
- NP01PW1** Power cable
- RGBCBL-PJPX** RGB cable
- Optional Lenses** NP16FL-4K, NP17ZL-4K, NP18ZL-4K, NP19ZL-4K, NP20ZL-4K, NP21ZL-4K, NP31ZL-4K, NP39ML-4K
- SB-01HC** HD/SS-SDI input card
- SB-04HC** 3G/HD/SD-SDI input Card
- SB-06WC** WiDi / Miracast Media-Player
- N8000-8830** NEC OPS PC with Intel Core i5, 320GB Hard Drive, Windows Embedded Standard 7
- N8000-8822** NEC OPS PC with Intel Celeron, 320GB Hard Drive, Windows Embedded Standard 7

ORDERING MODEL NUMBERS

- 68100-4KSS White
- 68100-4KSSB Black
- 68100-4KSS-L White w lens, TR 1.7-2.3:1
- 68100-4KSSB-L Black w lens, TR 1.7-2.3:1

Display Technology		0.66" TRP DMD
Light Output (lumens)		10,000 normal / Eco = variable
Resolution	Native	WXGA 2716 x 1528 + 4K Smoothing
	Maximum	4K 4096 x 2160
Contrast Ratio (up to)		10,000:1 with dynamic contrast
Lamp Life (up to)		20,000 hours
Screen Size (diagonal)		40 to 500 in. / 1.57 to 19.7m
Throw Ratio	NP39ML-4K	0.38:1
	NP31ZL-4K	0.74 - 0.93:1
	NP16FL-4K	0.76:1
	NP17ZL-4K	1.24 - 1.78:1
	NP18ZL-4K	1.71 - 2.25:1
	NP19ZL-4K	2.20 - 3.67:1
	NP20ZL-4K	3.54 - 5.36:1
Projection Distance		1.6 to 182.9 ft. / 0.6 to 55.8m
Projection Angle		1.2 to 17.6° tele / 1.8 to 22.0° wide
Lens	Zoom	Powered
	Zoom Ratio	Variable
	Focus	Powered
	NP39ML-4K	F=2.0, f=5.64mm, 6.0 lbs. (2.7 kg)
	NP31ZL-4K	F=1.96 to 2.3, f=11.3 to 14.1mm, 2.9 lbs. (1.3 kg)
	NP16FL-4K	F=1.85, f=11.6mm, 2.0 lbs. (0.9 kg)
	NP17ZL-4K	F=1.85 to 2.5, f=18.7 to 26.5mm, 2.4 lbs. (1.1 kg)
	NP18ZL-4K	F=1.70 to 1.90, f=26.0 to 34.0mm, 1.8 lbs. (0.8 kg)
	NP19ZL-4K	F=1.86 to 2.48, f=32.9 to 54.2mm, 2.2 lbs. (1.0 kg)
	NP20ZL-4K	F=1.85 to 2.41, f=52.8 to 79.1mm, 2.2 lbs. (1.0 kg)
NP21ZL-4K	F=1.85 to 2.48, f=78.5 to 121.9mm, 3.0 lbs. (1.35 kg)	
Shift		Powered +0.50/-0.30 vertical, +0.20/-0.10 horizontal
Keystone Correction		+/- 40° horizontal, +/- 40° vertical
Synchronization Range	Horizontal	Analog: 15-100kHz, Digital: 15-153kHz
	Vertical	Analog: 48-120Hz, Digital: 24-120Hz
Supported Video Standards		NTSC, NTSC4.43, PAL, PAL-60, PAL-M, PAL-N, SECAM
SD/HD Video Signal Compatibility		1080p, 1080i, 720p, 576p, 576i, 480p, 480i
PC Signal Compatibility		VGA, SVGA, XGA, SXGA, SXGA+, UXGA, WUXGA
Macintosh Compatibility		Yes
Input/Output Terminals		
Input Terminals	RGB1 (digital)	HDMI (V2.0) w/HDCP (V1.4/2.2) - 4096 x 2160 @ 60p, 12 bit 4:4:4
	RGB2 (digital)	HDMI (V2.0) w/HDCP (V1.4/2.2) - 4096 x 2160 @ 60p, 12 bit 4:4:4
	RGB3 (digital)	DisplayPort w/HDCP (V1.4) - 4096 x 2160 @ 60p, 12 bit 4:4:4
	RGB4 (digital)	DisplayPort w/HDCP (V1.4) - 4096 x 2160 @ 60p, 12 bit 4:4:4
	RGB5 (digital)	HDBaseT w/HDCP (V1.4/2.2) - 4096 x 2160 @ 60p, 8 bit 4:2:0
	RGB6 (digital)	Quad 3G-SDI
Option Slot		OPS
External Control		RS-232, IR, HDBaseT, DDC/CI, RJ-45, USB (USB 2.0), Stereo Mini
Sync Compatibility		Separate Sync / Composite Sync / Sync on G
Power Requirements		100 - 240V AC, 50/60Hz
Input Current		TBD
Power Consumption		
(ECO off/ECO Mode/Standby/Standby-Power Saving)		TBD
Installation Orientation		Floor/Front, Floor/Rear, Ceiling/Front, Ceiling/Rear
Dimensions (WxDxH)		19.7 x 22.8 x 8.5 in. / 500 x 583 x 216mm
Net Weight		63.9 lbs. / 29.0 kg
Fan Noise		43 dB normal / 39 dB eco
Regulations		USA: UL(U60950-1, Laser + Lamp (IEC60825-1 + IEC62471), FCC Part15 Class A Canada: CUL(U60950-1, Laser + Lamp (IEC60825-1 + IEC62471), ICES-003 Class A
Operating Temperature		-14° - 122°F / -10° - 50°C
Humidity		20-80% non-condensing
Storage		-14° - 122°F / -10° - 50°C

* Lens does not ship with the projector. Additional accessories are available, including screens, carts, mount accessories and replacement cables.



3D Reform, Advanced AccuBlend, AutoSense and ECO Mode are trademarks of NEC Display Solutions. HDMI, the HDMI Logo and High-Definition Multimedia Interface are trademarks or registered trademarks of HDMI Licensing LLC. All other brand or product names are trademarks or registered trademarks of their respective holders. Product specifications subject to change.