

DUKANE

6700SS, Solid State Series

Professional Installation Projectors ideal for corporate, higher education and museum applications



Powerful installation projectors equipped to take on the most demanding integration projects

Powerful Tools

- Multi-display support with Picture by Picture/Picture Out Picture
- TileMatrix (internal multi-screen splitter) enables 4Kx2K resolution utilizing 4 projectors without the need for external hardware
- Built-in daisy chain capabilities support multi-display applications
- Seamlessly blend multiple images with integrated edge blending capabilities

Integrated

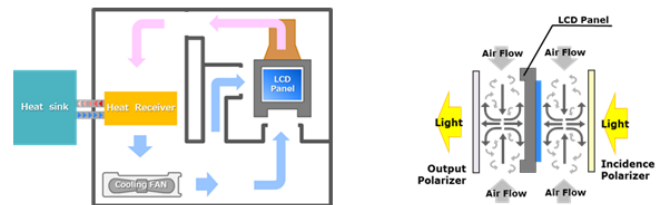
- 4K Ready - HDR10, BT.2020 signal format applicable for use with the "Ultra HD Blu-ray" and "4K TV broadcasting" Project uncompressed FHD video with integrated HDBase™
- High performance video processing/scaling creates life-like images
- Integrated software applications such as AMX Beacon, Crestron Roomview, Extron XTP and PJ Link allow for complete interactivity and control
- Basic control of competitors product reducing the need for reprogramming of a control system.

Flexible

- Enjoy greater installation flexibility with a complete line of optional bayonet style lenses 8) for quick and easy exchange. Lens throw distances range from 2.5 to 68.5 ft
- Tilt-free installation capabilities make these projector ideal for almost any install environment, including portrait orientation
- Up to 60% vertical lens shift and +/- 30% horizontal lens shift capabilities make alignment easy

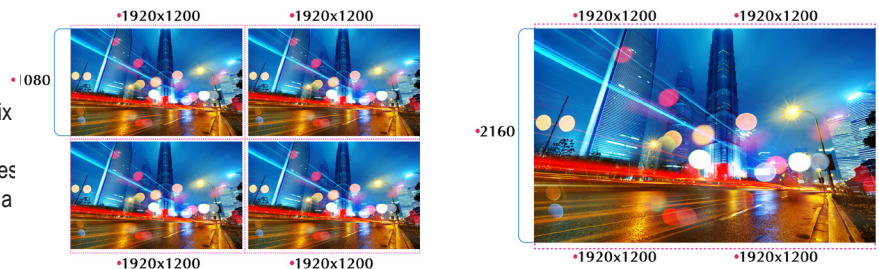
Filter Free

- World's first filter free LCD projector
- Unique Jet impingement cooling method prevents external contaminants from being deposited on the LCD panel
- No degradation of image brightness due to dust
- Maintenance free resulting in lowering TCO



Screen Splitter

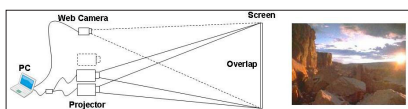
We are now bringing the latest and greatest innovation to projectors. Multi-display capabilities and TileMatrix technologies are integrated into the new series projectors. This processing is all done internally and therefore eliminates the additional hardware typically required to produce a beautiful 4K resolution image.



Screen Splitter (Multi Display) by Daisy Chain

Stacking correction

The industry's first built-in stacking correction capabilities (up to four projectors) allows the projectors to boost an image's brightness up to 32,000 lumens, which is ideal for larger-sized screens and environments with heavy ambient light. This feature also prevents the complete loss of an image, which can happen when using only one projector.



Edge blending

This function seamlessly blends multiple projected images to display a single high-resolution image.



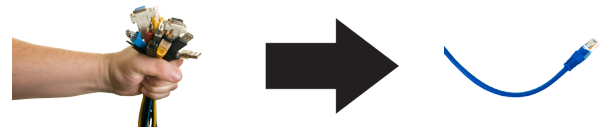
MultiPresenter

Utilization of the optional MultiPresenter Stick provides those looking for a network connection easy connection with up to 12 devices at once. (Win, MAC, Android, iOS) Screen mirroring for Android and Win. Simple annotation software.



Built-In HDBaseT Support

Simplify your installations with HDBaseT. Optimized for video applications and supporting uncompressed full HD digital video, audio, ethernet, power and various control signals. With only a single cable (up to 100m) to run, infrastructure and labor costs are reduced, installations are significantly easier, and there is no cable clutter to manage. With uncompressed HD video support, images have never been more stunning. What's more, control signals are contained in the same cable.



GET CONNECTED WITH A WIDE SELECTION OF INPUTS

- **Multiple Digital computer inputs** ensure quick switching between presentations
- **Five audio inputs (one mini stereo [HDMI1™ & HDMI2™, DisplayPort and HDBaseT])** make it easy to add sound to enhance your presentations

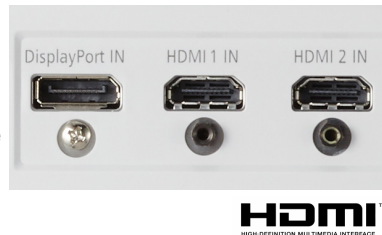
Remote control

Wired and wireless backlit remote allows you to adjust for complete control of the projector's menu structure in a well lit or dark environment. Direct controls such as lamp mode, aspect ratio, volume and input selection eliminates multiple button pushes.



Digital Inputs

Among the Series' wide selection of inputs are dual HDMI w/HDCP and DisplayPort w/HDCP for connecting to high-definition sources such as Blu-ray players, cable boxes, satellite receivers and personal computers.



Input panel cover

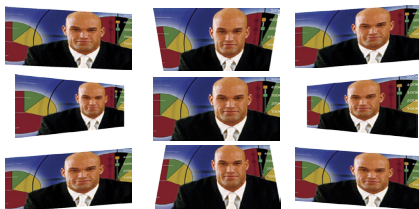
This optional accessory creates a clean look for your installation, while hiding signal cables and the power cord.



ADVANCED SOFTWARE FEATURES

Cornerstone

Enhanced keystone correction allows for horizontal, vertical and diagonal image correction for aligned images even when the projector is set up at an angle to the screen.



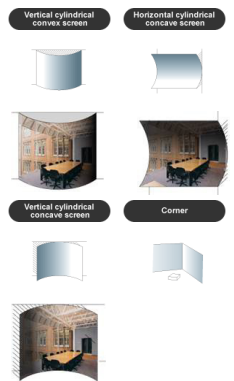
3D

When combined with active shutter glasses and 3D emitter, the Series Projectors create 3D images from a computer or Blu-ray player. The Series utilize the 3D sync line output from the projector to connect to the 3D emitter. Optional 3D glasses and emitters from XPAND are available.



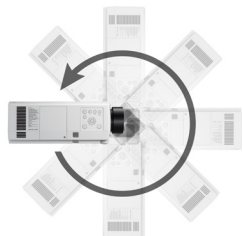
Geometric Correction

Projecting an image isn't confined to a standard flat screen or wall with the Series. Geometric correction allows these models to project an image on spheres, cylinders, corner angles and many more non-standard surfaces.



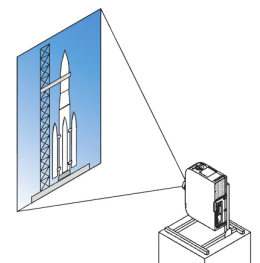
Tilt-free

The projector can be rotated freely (360°) to orient the image depending on the installation requirements



Portrait mode

Allows the projector to be rotated (and screen if necessary) to a vertical alignment so that portrait content can be viewed without black bars on the side when landscape mode is used.



Preliminary

DUKANE Specifications 6765WUSS and 6780WUSS

UNIQUE FEATURES

Variable audio-out enables the remote control to be used to adjust volume of self-powered external speakers that are connected to the projector. In stand-by mode, the audio-out stays active, allowing the last input used to pass to the self-powered external speakers.

Advanced AccuBlend™ ensures detailed images when non-native resolution sources are connected to the projector

64-step image magnification with location control

Built-in HTTP page for control and monitoring over a LAN network. Email notification of error messages or lamp end-of-life can be sent to remote locations.

WARRANTY

Five (5) year limited warranty plus Dukane's 1 year Peace of Mind Loaner Program

IN THE BOX

Remote control, batteries, power cord.

ACCESSORIES

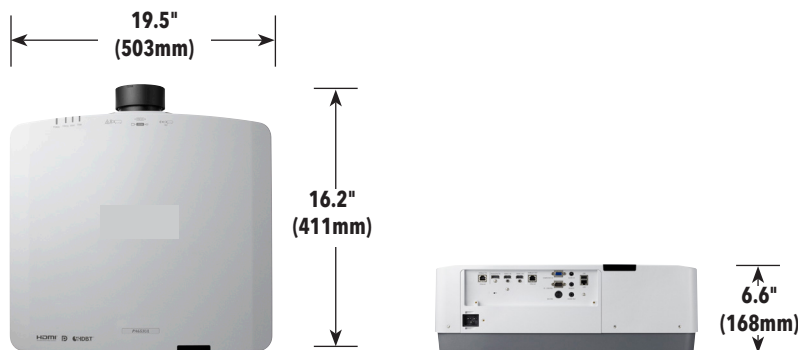
| | |
|-------------------|----------------------------|
| RMT-PJ37 | Replacement Remote Control |
| Optional Lenses | NP40ZL, NP41ZL, NP42ZL |
| DS1-MP10RX1 | MultiPresenter Stick |
| NP11CV | Terminal Cover |
| XPAND X105-RF-1 | 3D Glasses |
| XPAND AD025-RF-X1 | RF Emitter |

ORDERING MODEL NUMBERS

6765WUSS
 6780WUSS
Models with lens included (NP41ZL)
 6765WUSS-L
 6780WUSS-L

| | 6765WUSS | 6780WUSS |
|---|---|--|
| Display Technology | 0.76" LCD w MLA | |
| Light Output (lumens) | 6500 normal | 8000 normal |
| Resolution | Native | WUXGA 1920 x 1200 |
| | Maximum | 4K 4096 x 2160 |
| Contrast Ratio (up to) | 8,000:1 with auto iris | |
| Laser Life (up to) | 20,000 hours | |
| Screen Size (diagonal) | 50 to 500 in. / 1.27 to 12.7m, NP40ZL, NP41ZL, NP42ZL | |
| Throw Ratio | NP40ZL | 0.79 - 1.14 |
| | NP41ZL | 1.30 - 3.08 |
| | NP42ZL | 2.88 - 6.06 |
| Projection Distance | 2.5 to 68.5 ft. / 0.74 to 20.9m | |
| Projection Angle | 10.3 to 10.8° tele / 13.7 to 14.5° wide | |
| Lens | Zoom | Powered |
| | Zoom Ratio | Variable |
| | Focus | Powered |
| | NP40ZL | Power zoom / Power focus, F=2.0 to 2.5, f= 13.3 to 18.6mm, 4.2lbs. / 1.9 kg |
| | NP41ZL | Power zoom / Power focus, F=2.2 to 2.7, f= 21.8 to 49.7mm, 4.2 lbs. / 1.9 kg |
| NP42ZL | Power zoom / Power focus, F=2.2 to 2.6, f= 49.7 to 99.8mm, 4.1 lbs. / 1.8 kg | |
| Shift | Powered +0.5/-0.1 vertical, +/-30 horizontal | |
| Keystone Correction | +/- 40° horizontal, +/- 40° vertical | |
| Synchronization Range | Horizontal | Analog: 15-100kHz, Digital: 15-153kHz |
| | Vertical | Analog: 48-120Hz, Digital: 24-120Hz |
| Supported Video Standards | NTSC, NTSC4.43, PAL, PAL-60, PAL-M, PAL-N, SECAM | |
| SD/HD Video Signal Compatibility | 1080p, 1080i, 720p, 576p, 576i, 480p, 480i | |
| PC Signal Compatibility | VGA, SVGA, XGA, SXGA, SXGA+, UXGA, WUXGA | |
| Macintosh Compatibility | Yes | |
| Input Terminals | RGB1 (analog) | VGA 15 pin D-sub, Component video using ADP-CV1E adapter |
| | RGB2 (digital) | HDMI (V1.4) w/HDCP (V2.2) |
| | RGB3 (digital) | HDMI (V1.4) w/HDCP (V2.2) |
| | RGB4 (digital) | DisplayPort w/HDCP (V1.4) |
| | RGB5 (digital) | HDBaseT w/HDCP (V2.2) |
| | Audio1 | Stereo Mini Jack |
| Output Terminals | Monitor Out | HDBaseT |
| | Audio Out | Stereo Mini Jack |
| | 3D Sync Line | 3Pin D |
| Audio | | |
| External Control | RS-232, IR, HDBaseT, DDC/CI, RJ-45 | |
| Sync Compatibility | Separate Sync / Composite Sync / Sync on G | |
| Power Requirements | 100 - 240VAC, 50/60Hz | |
| Input Current | 10.2 A | 11.3 A |
| Power Consumption | 627 W | 798 W |
| (ECO off/ECO Mode/Standby/Standby-Power Saving) | 627 W / 580 W / 0.15W | 798 W / 604W / 0.15W |
| Installation Orientation | Floor/Front, Floor/Rear, Ceiling/Front, Ceiling/Rear | |
| Dimensions (WxDxH) | 22.8 x 19.3 x 8.2 in. / 580 x 490 x 208mm Ship; 32.5" x 27" x 12" (wo lens) | |
| Net Weight | 39.7 lbs. / 18.02 kg Ship 45 lbs (wo lens) | |
| Fan Noise | 39 dB normal / 33 dB eco | |
| Regulations | USA: UL 1950 FCC Class B, Canada: CSA950 (C-UL), NOM | |
| Operating Temperature | 41° - 104°F / 5° - 40°C | |
| Humidity | 20-80% non-condensing | |
| Storage | -14° - 122°F / -10° - 50°C | |

* Lens does not ship with the projector.
 Additional accessories are available, including screens, carts, mount accessories and replacement cables



DUKANE CORPORATION
 Audio Visual Products
 2900 Dukane Drive
 St. Charles, IL 60174
 Toll-free: 888-245-1966
 Fax: 630-584-5156
 E-mail: avsales@dukane.com

HDMI, the HDMI Logo and High-Definition Multimedia Interface are trademarks or registered trademarks of HDMI Licensing LLC. All other brand or product names are trademarks or registered trademarks of their respective holders. Product specifications subject to change.