

DUKANE

Professional Installation Projectors

6600 SS Series

6650WSSA | 6650HDSSA



Powerful installation projectors with laser-phosphor light source supports new, demanding projection applications.

Laser Light Module

- 20,000-plus hours of virtually maintenance-free operation
- High-brightness, lower power consumption enhances applications such as retail, digital signage and theme parks
- Ability to control brightness creating a stable image over longer time periods

Integrated and Powerful

- Project uncompressed FHD video with integrated HDBaseT
- High performance video processing/scaling creates life-like images
- Integrated software applications such as Crestron Roomview, AMX Beacon and PJ Link allow for complete interactivity and control

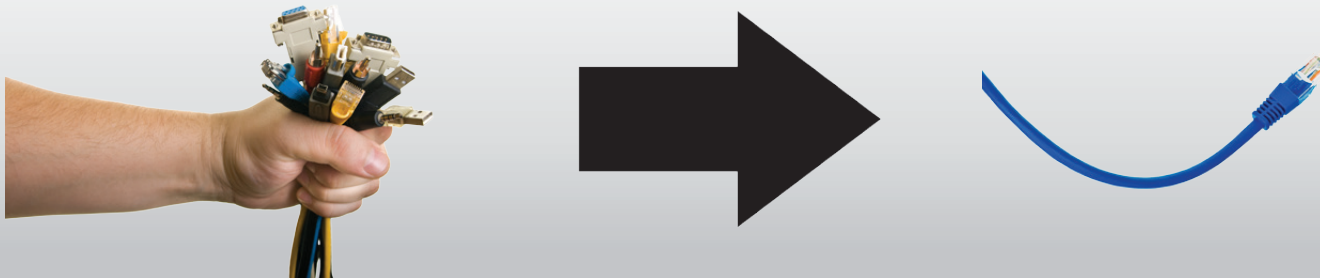
Flexible

- Tilt-free installation capabilities make these projector ideal for almost any install environment, including portrait orientation



Built-In HDBaseT Support

Simplify your installations with HDBaseT. Optimized for video applications and supporting uncompressed full HD digital video, audio, ethernet, power and various control signals. With only a single cable (up to 100m) to run, infrastructure and labor costs are reduced, installations are significantly easier, and there is no cable clutter to manage. With uncompressed HD video support, images have never been more stunning. What's more, control signals are contained in the same cable.



GET CONNECTED WITH A WIDE SELECTION OF INPUTS

- **Dual computer inputs** ensure quick switching between presentations

Remote control

Easy control from remote allows you to adjust lamp mode, aspect ratio, volume and image all with the touch of a button.



Wall color correction presets

These provide for adaptive color tone correction to display properly on non-white surfaces.

On a green wall...



BEFORE
auto wall correction



AFTER
auto wall correction



Input panel cover

This optional accessory creates a clean look for your installation, while hiding signal cables and the power cord.



ADVANCED SOFTWARE FEATURES

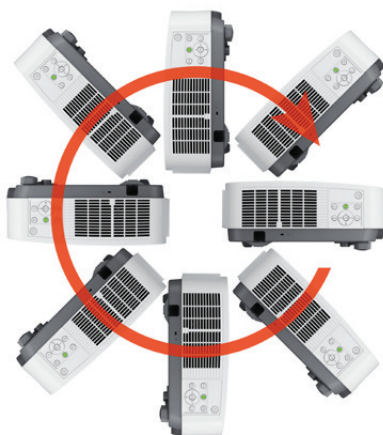
Full HD 3D video (144Hz)

When combined with active shutter glasses and 3D emitter, the M Series Projectors create 3D images from a computer or Blu-ray player. The projectors utilize the 3D sync line output to connect to the 3D emitter. Optional 3D glasses and emitters by XPAND are available from Dukane (X105-RF-X2 / AD025-RF-X1)



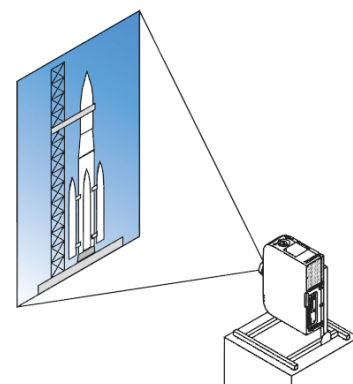
Tilt-free

The projector can be rotated freely (360°) to orient the image depending on the installation requirements



Portrait mode

Allows the projector to be rotated (and screen if necessary) to a vertical alignment so that portrait content can be viewed without black bars on the side when landscape mode is used.



UNIQUE FEATURES

Advanced AccuBlend™ ensures detailed images when non-native resolution sources are connected to the projector

AutoSense™ automatically syncs with any computer signal and features one-touch image optimization

64-step image magnification with location control

Discreet source keys for source selection

Remote diagnostics enable the user to monitor and make adjustments to the projector remotely

Built-in HTTP page for control and monitoring over a LAN network. Email notification of error messages or lamp end-of-life can be sent to remote locations.

WARRANTY

Five (5) year limited warranty plus Dukane's 1 year Peace of Mind Loaner Program

SHIPS WITH

Remote control, batteries, power cord.

ACCESSORIES

| | |
|---------------------|--|
| NP05LM1 | Wireless LAN Module |
| RMT-PJ35 | Replacement remote control |
| PWRCRD-PJPX | Power cable |
| RGBCBL-PJPX | RGB cable |
| NP08CV | Safety Cover for Portrait Installation |
| X105-RF-X2 | XPAND 3D RF Glasses |
| AD025-RF-X11 | XPAND 3D RF Transmitter |
| DNSL | DisplayNote Site License |

ORDERING MODEL NUMBERS

6650WSSA
6650HDSSA

| | 6650WSSA | 6650HDSSA |
|---|--|--|
| Display Technology | 0.65" DMD | |
| Light Output (lumens) | 5000 normal / Eco = variable | |
| Resolution | Native | WXGA 1280 x 800 |
| | Maximum | WUXGA 1920 x 1200 |
| Contrast Ratio (up to) | 15,000:1 with auto iris | |
| Laser Life (up to) | 20,000 hours | |
| Screen Size (diagonal) | 30 to 300 in. / 0.76 to 7.62m | |
| Throw Ratio | 1.3 - 2.2 | 1.24 - 2.1 |
| Projection Distance | 2.6 to 46.6 ft. / 0.8 to 14.2m | |
| Projection Angle | 12.6 to 12.9° tele / 21.0 to 21.9° wide | |
| Lens | Zoom | Manual |
| | Zoom Ratio | 1.7:1 |
| | Focus | Manual |
| | F-number, f-number | F= 2.0, f= 18.2 to 31.1mm |
| | Shift | Manual +0.59 vertical, +/-28 horizontal |
| Keystone Correction | Manual +0.62 vertical, +/-25 horizontal | |
| Scan Rate | Horizontal | 15 – 100 kHz |
| | Vertical | 50 – 120 Hz |
| Supported Video Standards | NTSC, NTSC4.43, PAL, PAL-60, PAL-M, PAL-N, SECAM | |
| SD/HD Video Signal Compatibility | 1080p, 1080i, 720p, 576p, 576i, 480p, 480i | |
| PC Signal Compatibility | VGA, SVGA, XGA, SXGA, SXGA+, UXGA, WUXGA | |
| Macintosh Compatibility | Yes | |
| Input/Output Terminals | RGB1 (analog) | 15 pin, Component video using ADP-CV1E adapter |
| | RGB2 (digital) | HDMI w/HDCP |
| | RGB3 (digital) | HDMI w/HDCP |
| | RGB4 (digital) | HDBaseT |
| | Video | RCA |
| | Audio 1 | L/R RCA (shared by video sources) |
| | Audio 2 | 1/8 in. stereo |
| | Audio Out | mini stereo (Variable audio out) |
| Monitor Out | 15Pin D-sub | |
| 3D Sync Line | 3Pin D | |
| Audio | 20W mono | |
| External Control | RS-232, IR, HDBaseT, DDC/CI, USB | |
| Sync Compatibility | Separate Sync / Composite Sync / Sync on G | |
| Power Requirements | 100 – 240V AC, 50/60Hz | |
| Input Current | 5.7A - 2.3A | |
| Power Consumption (ECO off/ECO Mode/Standby/Standby-Power Saving) | 464W / 362W / 2.1W / 0.5W | |
| Installation Orientation | Floor/Front, Floor/Rear, Ceiling/Front, Ceiling/Rear | |
| Dimensions (WxDxH) | 18.5 x 14.4 x 5.4 in. / 469 x 365 x 137mm | |
| Net Weight | 19.4 lbs. / 8.8 kg | |
| Fan Noise | 39 dB normal / 33 dB eco | |
| Regulations | USA: UL(UL60950-1, Laser + Lamp (IEC60825-1 Ed.3 + IEC62471-1/-5), FCC Part15 Class B Canada: CUL(UL60950-1, Laser + Lamp (IEC60825-1 Ed.3 + IEC62471-1/-5), ICES-003 Class B | |
| Operating Temperature | 41° – 104°F / 5° – 40°C | |
| Humidity | 20-80% non-condensing | |
| Storage | -14° – 122°F / -10° – 50°C | |

Additional accessories are available, including screens, carts, mount accessories and replacement cables. Visit www.dukaneav.com for details.



DUKANE CORPORATION
Audio Visual Products
2900 Dukane Drive
St. Charles, IL 60174
Toll-free: 888-245-1966
Fax: 630-584-5156
E-mail: avsales@dukane.com

HDMI, the HDMI Logo and High-Definition Multimedia Interface are trademarks or registered trademarks of HDMI Licensing LLC. All other brand or product names are trademarks or registered trademarks of their respective holders. Product specifications subject to change.