

DUKANE

Professional Installation Projectors

6600 SS Series

6650WSS | 6650HDSS



Powerful installation projectors with laser-phosphor light source supports new, demanding projection applications.

Laser Light Module

- 20,000-plus hours of virtually maintenance-free operation
- High-brightness, lower power consumption enhances applications such as retail, digital signage and theme parks
- Ability to control brightness creating a stable image over longer time periods

Integrated and Powerful

- Project uncompressed FHD video with integrated HDBaseT
- High performance video processing/scaling creates life-like images
- Integrated software applications such as Crestron Roomview, AMX Beacon and PJ Link allow for complete interactivity and control

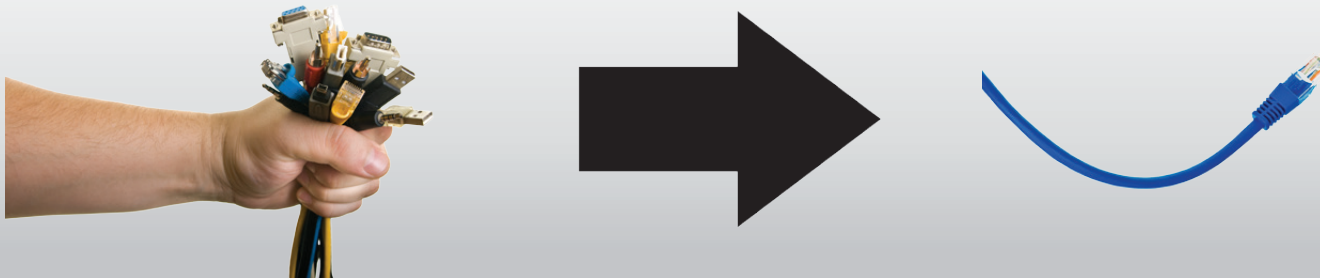
Flexible

- Tilt-free installation capabilities make these projector ideal for almost any install environment, including portrait orientation



Built-In HDBaseT Support

Simplify your installations with HDBaseT. Optimized for video applications and supporting uncompressed full HD digital video, audio, ethernet, power and various control signals. With only a single cable (up to 100m) to run, infrastructure and labor costs are reduced, installations are significantly easier, and there is no cable clutter to manage. With uncompressed HD video support, images have never been more stunning. What's more, control signals are contained in the same cable.



GET CONNECTED WITH A WIDE SELECTION OF INPUTS

- **Dual computer inputs** ensure quick switching between presentations

Remote control

Easy control from remote allows you to adjust lamp mode, aspect ratio, volume and image all with the touch of a button.



Wall color correction presets

These provide for adaptive color tone correction to display properly on non-white surfaces.

On a green wall...



BEFORE
auto wall correction



AFTER
auto wall correction



Input panel cover

This optional accessory creates a clean look for your installation, while hiding signal cables and the power cord.



ADVANCED SOFTWARE FEATURES

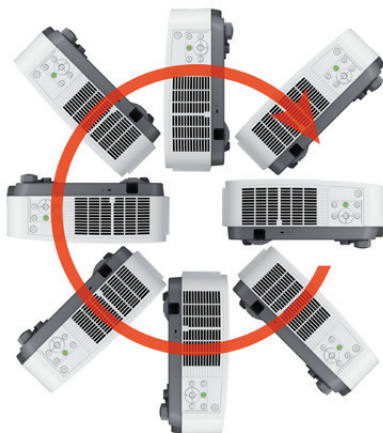
Full HD 3D video (144Hz)

When combined with active shutter glasses and 3D emitter, the M Series Projectors create 3D images from a computer or Blu-ray player. The projectors utilize the 3D sync line output to connect to the 3D emitter. Optional 3D glasses and emitters by XPAND are available from Dukane (X105-RF-X2 / AD025-RF-X1)



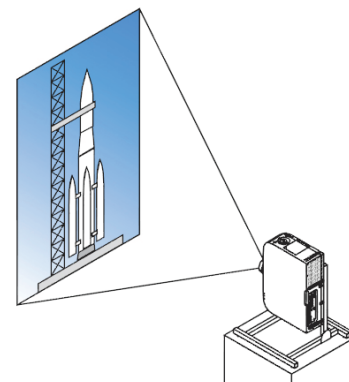
Tilt-free

The projector can be rotated freely (360°) to orient the image depending on the installation requirements



Portrait mode

Allows the projector to be rotated (and screen if necessary) to a vertical alignment so that portrait content can be viewed without black bars on the side when landscape mode is used.



UNIQUE FEATURES

Advanced AccuBlend™ ensures detailed images when non-native resolution sources are connected to the projector

AutoSense™ automatically syncs with any computer signal and features one-touch image optimization

64-step image magnification with location control

Discreet source keys for source selection

Remote diagnostics enable the user to monitor and make adjustments to the projector remotely

Built-in HTTP page for control and monitoring over a LAN network. Email notification of error messages or lamp end-of-life can be sent to remote locations.

WARRANTY

Five (5) year limited warranty plus Dukane's 1 year Peace of Mind Loaner Program

SHIPS WITH

Remote control, batteries, power cord.

ACCESSORIES

NP05LM1	Wireless LAN Module
RMT-PJ35	Replacement remote control
PWRCRD-PJPX	Power cable
RGBCBL-PJPX	RGB cable
NP08CV	Safety Cover for Portrait Installation
X105-RF-X2	XPAND 3D RF Glasses
AD025-RF-X11	XPAND 3D RF Transmitter
DNSL	DisplayNote Site License

ORDERING MODEL NUMBERS

6650WSS
6650HDSS

	6650WSS	6650HDSS	
Display Technology	0.65" DMD		
Light Output (lumens)	5000 normal / Eco = variable		
Resolution	Native	WXGA 1280 x 800	
	Maximum	WUXGA 1920 x 1200	
Contrast Ratio (up to)	15,000:1 with auto iris		
Laser Life (up to)	20,000 hours		
Screen Size (diagonal)	30 to 300 in. / 0.76 to 7.62m		
Throw Ratio	1.3 - 2.2	1.24 - 2.1	
Projection Distance	2.6 to 46.6 ft. / 0.8 to 14.2m		
Projection Angle	12.6 to 12.9° tele / 21.0 to 21.9° wide		
Lens	Zoom	Manual	
	Zoom Ratio	1.7:1	
	Focus	Manual	
	F-number, f-number	F= 2.0, f= 18.2 to 31.1mm	
	Shift	Manual +0.59 vertical, +/-28 horizontal	Manual +0.62 vertical, +/-25 horizontal
Keystone Correction	+/- 25° horizontal, +/- 30° vertical		
Scan Rate	Horizontal	15 - 100 kHz	
	Vertical	50 - 120 Hz	
Supported Video Standards	NTSC, NTSC4.43, PAL, PAL-60, PAL-M, PAL-N, SECAM		
SD/HD Video Signal Compatibility	1080p, 1080i, 720p, 576p, 576i, 480p, 480i		
PC Signal Compatibility	VGA, SVGA, XGA, SXGA, SXGA+, UXGA, WUXGA		
Macintosh Compatibility	Yes		
Input/Output Terminals	RGB1 (analog)	15 pin, Component video using ADP-CV1E adapter	
	RGB2 (digital)	HDMI w/HDCP	
	RGB3 (digital)	HDMI w/HDCP	
	RGB4 (digital)	HDBaseT	
	Video	RCA	
	Audio 1	L/R RCA (shared by video sources)	
	Audio 2	1/8 in. stereo	
	Audio Out	mini stereo (Variable audio out)	
Monitor Out	15Pin D-sub		
3D Sync Line	3Pin D		
Audio	20W mono		
External Control	RS-232, IR, HDBaseT, DDC/CI, USB		
Sync Compatibility	Separate Sync / Composite Sync / Sync on G		
Power Requirements	100 - 240V AC, 50/60Hz		
Input Current	5.7A - 2.3A		
Power Consumption (ECO off/ECO Mode/Standby/Standby-Power Saving)	464W / 362W / 2.1W / 0.5W		
Installation Orientation	Floor/Front, Floor/Rear, Ceiling/Front, Ceiling/Rear		
Dimensions (WxDxH)	18.5 x 14.4 x 5.4 in. / 469 x 365 x 137mm		
Net Weight	19.4 lbs. / 8.8 kg		
Fan Noise	39 dB normal / 33 dB eco		
Regulations	USA: UL/UL60950-1, Laser + Lamp (IEC60825-1 Ed.3 + IEC62471-1/-5), FCC Part15 Class B Canada: CUL/UL60950-1, Laser + Lamp (IEC60825-1 Ed.3 + IEC62471-1/-5), ICES-003 Class B		
Operating Temperature	41° - 104°F / 5° - 40°C		
Humidity	20-80% non-condensing		
Storage	-14° - 122°F / -10° - 50°C		

Additional accessories are available, including screens, carts, mount accessories and replacement cables. Visit www.dukaneav.com for details.



DUKANE CORPORATION
Audio Visual Products
2900 Dukane Drive
St. Charles, IL 60174
Toll-free: 888-245-1966
Fax: 630-584-5156
E-mail: avsales@dukane.com

HDMI, the HDMI Logo and High-Definition Multimedia Interface are trademarks or registered trademarks of HDMI Licensing LLC. All other brand or product names are trademarks or registered trademarks of their respective holders. Product specifications subject to change.