

DUKANE

Professional Installation Projectors

6600 A Series

6645WA | 6645HDA | 6650WA | 6650HDA



Powerful and compact installation projectors with a feature set designed for the most demanding projection applications.

Integrated and Powerful

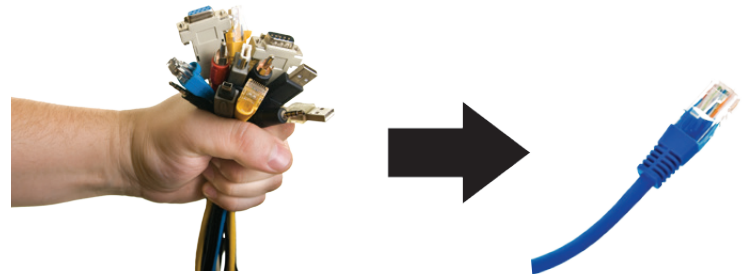
- Project uncompressed FHD video with integrated HDBaseT
- High performance video processing/scaling creates life-like images
- Integrated software applications such as Crestron Roomview, AMX Beacon and PJ Link allow for complete interactivity and control

Flexible

- Horizontal & vertical keystone adjustment provides the ability to square the image to the screen
- Lens shift capabilities make alignment easy: 6645WA/6650WA (+59 vertical, +/- 28% horizontal), 6645HDA/6650HDA (+62 vertical, +/- 25% horizontal)

Built-In HDBaseT Support

Simplify your installations with HDBaseT. Optimized for video applications and supporting uncompressed full HD digital video, audio, ethernet, power and various control signals. With only a single cable (up to 100m) to run, infrastructure and labor costs are reduced, installations are significantly easier, and there is no cable clutter to manage. With uncompressed HD video support, images have never been more stunning. What's more, control signals are contained in the same cable.

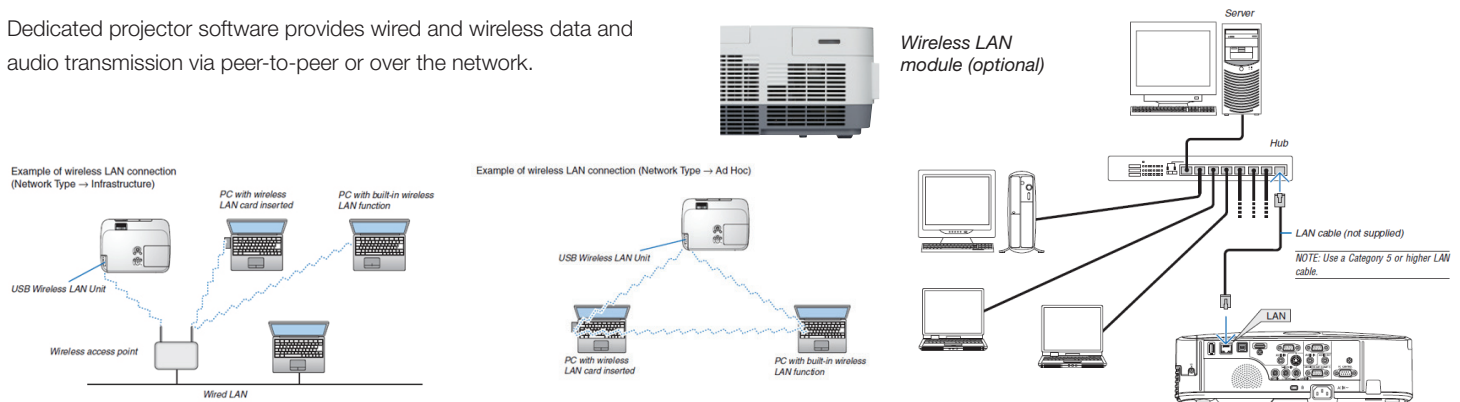


Advanced Networking Capabilities

- Integrated RJ45 connection for quick connection to the LAN (10/100 base-T capability)
- Remote diagnostics enable the user to monitor and make adjustments to the projector remotely
- PC CTL 4.0 controls the power switching input selection and other functions while managing lamp usage and a variety of other vital information over the network. Email notification and projector scheduling for better asset management is included with the software.
- PC CTL 5.0 for MAC users
- Control and receive important broadcast messages via Crestron Roomview™
- Wireless Image Utility (WIU) sends images directly from an iPad to the projector (requires wireless LAN module NP05LM1)
- Simple Access Point Sending photos and documents have never been easier from a computer or iPad.
- MultiPresenter enables up to 16 wireless devices to be connected to the projector simultaneously with access controlled by the moderator.

Image Express Lite

Dedicated projector software provides wired and wireless data and audio transmission via peer-to-peer or over the network.

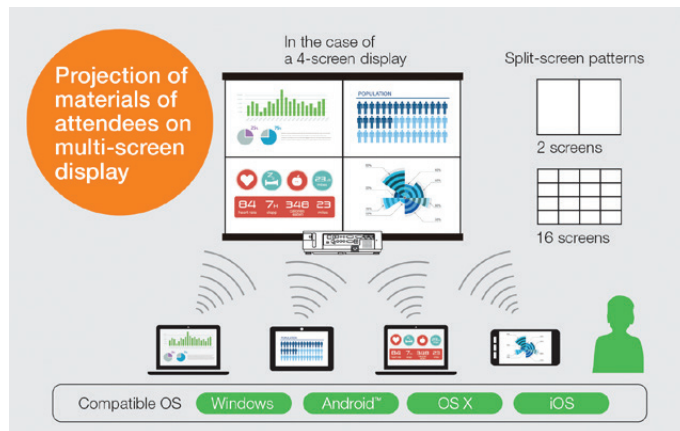


6600 A Series Features

Multi-screen Projection Function*

The multi-screen projection function allows you to share screens from multiple devices on various split-screen displays. Display information from up to 16 PCs, tablet PCs, smart phones, and other network connected devices on a multi-screen display of up to 16 screens. Easily share screens and information regardless of device or operating system.

*Requires an optional wireless LAN module for wireless connection. PCs require the installation of the Image Express Utility Lite software on the included CD-ROM. Smart phones and tablets require the download and installation of our Wireless Image Utility software.



Remote control

Easy control from remote allows you to adjust lamp mode, aspect ratio, volume and image all with the touch of a button.



Dual HDMI inputs

Among the 6600 A Series' wide selection of inputs are 2 HDMI w/HDCP (one MHL compatible) for connecting to high-definition sources such as Blu-ray players, cable boxes, satellite receivers and personal computers.



Variable audio-out

This input enables the remote control to be used to adjust volume of self powered external speakers that are connected to the projector. In stand-by mode, the audio-out stays active, allowing the last input used to pass to the self-powered external speakers.



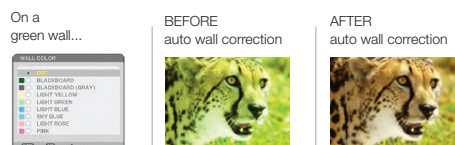
Top cover lamp change

This feature provides for easy lamp changes without removal of the projector from the mount.



Wall color correction presets

These provide for adaptive color tone correction to display properly on non-white surfaces.



Input panel cover

This optional accessory creates a clean look for your installation, while hiding signal cables and the power cord.



FULL HD 3D video (144Hz)

When combined with active shutter glasses and 3D emitter, the 6600 A Series Projectors create 3D images from a computer or Blu-ray player. The projectors utilize the 3D sync line output to connect to the 3D emitter. Optional 3D glasses and emitters by XPAND are available from Dukane (X105-RF-X2 / AD025-RF-X1)



UNIQUE FEATURES

Advanced AccuBlend™ ensures detailed images when non-native resolution sources are connected to the projector

AutoSense™ automatically syncs with any computer signal and features one-touch image optimization

64-step image magnification with location control

Discreet source keys for source selection

Remote diagnostics enable the user to monitor and make adjustments to the projector remotely

Built-in HTTP page for control and monitoring over a LAN network. Email notification of error messages or lamp end-of-life can be sent to remote locations.

WARRANTY

Five (5) year limited warranty plus Dukane's 1 year Peace of Mind Loaner Program

SHIPS WITH

Remote control, batteries, RGB signal cable power cord, lens cap, security sticker, product registration card.

ACCESSORIES

SCP200	Suspended ceiling plate
PRG-UNV	Ceiling mount
NP05LM1	Wireless LAN Module
RMT-PJ35	Replacement remote control
PWRCRD-VT70	Power cable
RGBCBL-PJPX	RGB cable
456-6645WA	Replacement Lamp for 6645WA/6645HDA
456-6650WA	Replacement Lamp for 6650WA/6650HDA
NP09CV	Terminal Cover
X105-RF-X2	XPAND 3D RF Glasses
AD025-RF-X11	XPAND 3D RF Transmitter
DNSL	DisplayNote Site License

		6645WA 6650WA	6645HDA 6650HDA
Display Technology		0.65" DMD	
Light Output (lumens)		6645WA - 4500 normal / Eco = variable 6650WA - 5000 normal / Eco = variable	6645HDA - 4500 normal / Eco = variable 6650HDA - 5000 normal / Eco = variable
Resolution	Native	WXGA 1280 x 800	1080p 1920 x 1080
	Maximum	WUXGA 1920 x 1200	
Contrast Ratio (up to)		6,000:1 with auto iris	
Lamp Life (up to)		5000 hours	
Screen Size (diagonal)		30 to 300 in. / 0.76 to 7.62m	
Throw Ratio		1.3 - 2.2	1.24 - 2.1
Projection Distance		2.6 to 47.6 ft. / 0.8 to 14.5m	2.6 to 46.6 ft. / 0.8 to 14.2m
Projection Angle		12.6 to 12.9° tele / 21.0 to 21.9° wide	13.2 to 13.5° tele / 21.9 to 22.9° wide
Lens	Zoom	Manual	
	Zoom Ratio	1.7:1	
	Focus	Manual	
	F-number, f-number	F= 2.0, f= 18.2 to 31.1mm	
	Shift	Manual +0.59 vertical, +/-28 horizontal	Manual +0.62 vertical, +/-25 horizontal
Keystone Correction		+/- 25° horizontal, +/- 30° vertical	
Synchronization Range	Horizontal	Analog: 15-100kHz, Digital: 15-153kHz	
	Vertical	Analog: 48-120Hz, Digital: 24-120Hz	
Supported Video Standards		NTSC, NTSC4.43, PAL, PAL-60, PAL-M, PAL-N, SECAM	
SD/HD Video Signal Compatibility		1080p, 1080i, 720p, 576p, 576i, 480p, 480i	
PC Signal Compatibility		VGA, SVGA, XGA, SXGA, SXGA+, UXGA, WUXGA	
Macintosh Compatibility		Yes	
Input/Output Terminals	RGB1 (analog)	15 pin, Component video using ADP-CV1E adapter	
	RGB2 (digital)	HDMI w/HDCP	
	RGB3 (digital)	HDMI w/HDCP	
	RGB4 (digital)	HDBaseT	
	Video	RCA	
	Audio 1	L/R RCA (shared by video sources)	
	Audio 2	1/8 in. stereo	
	Audio Out	1/8 in. stereo (Variable audio out)	
	Monitor Out	15Pin D-sub	
3D Sync Line		3Pin D	
Audio		20W mono	
External Control		RS-232, IR, HDBaseT, RJ45, DDC/CI, USB	
Sync Compatibility		Separate Sync / Composite Sync / Sync on G	
Power Requirements		100 – 240V AC, 50/60Hz	
Input Current		4.9A to 2.0A 5.4A to 2.2A	4.9A to 2.0A 5.4A to 2.2A
Power Consumption (ECO off/ECO Mode/Standby/Standby-Power Saving)		6645WA - 426W / 288W / 2.7W / 0.26W 6650WA - 465W / 311W / 2.7W / 0.26W	6645HDA - 426W / 288W / 2.7W / 0.26W 6650HDA - 465W / 311W / 2.7W / 0.26W
Installation Orientation		Floor/Front, Floor/Rear, Ceiling/Front, Ceiling/Rear	
Dimensions (WxDxH)		14.3 x 12.1 x 5.5 in. / 362 x 306 x 139mm	
Net Weight		11.5 lbs. / 5.2 kg	
Fan Noise		39 dB normal / 31 dB eco	
Regulations		USA: UL/UL60950-1, FCC Part15 Class B Canada: CUL/UL60950-1, CES-003 Class B	
Operating Temperature		41° – 104°F / 5° – 40°C	
Humidity		20-80% non-condensing	
Storage		-14° – 122°F / -10° – 50°C	

ORDERING MODEL NUMBERS

6645WA	6645HDA
6650WA	6650HDA



HDMI, the HDMI Logo and High-Definition Multimedia Interface are trademarks or registered trademarks of HDMI Licensing LLC. All other brand or product names are trademarks or registered trademarks of their respective holders. Product specifications subject to change.

DUKANE

DUKANE CORPORATION
Audio Visual Products
2900 Dukane Drive
St. Charles, IL 60174
Toll-free: 888-245-1966
Fax: 630-584-5156
E-mail: avsales@dukane.com

www.dukaneav.com

Additional accessories are available, including screens, carts, mount accessories and replacement cables. Visit www.dukaneav.com for details.