

6528A, 6532A, 6536A, 6540A, 6532WA, 6536WA and 6540HDA digital projectors

## 6500 Series

Easy to use and at the right price, 6500 Series projectors provide all the essential features that you need for brilliant display in classrooms and meeting rooms while providing low cost of ownership with minimal maintenance.



### Essential Features for Educational Facilities

- Plug and Play intuitive setup and operation
- Bright images easily viewed in any application
- Versatile, color-coded connections to computer, video sources and external monitor
- Automatic keystone correction technology instantly projects a square image even when the projector is set up at a steep offset angle to the screen
- AutoSense™ intuitively syncs the projector with most computer signals and features one-touch image optimization
- One-touch source changes and complete menu control using the intuitive projector keypad
- Powerful 20-watt speaker provides volume needed for large rooms
- High contrast images (10,000:1) from the latest Texas Instruments DLP engine featuring BrilliantColor™ technology with improved color accuracy
- With XGA, WXGA and 1080p native resolutions, high brightness up to 4000 lumens and patented DUKANE technologies, 6500 Series projectors display impressive image quality

### Designed with the Environment in Mind

- Extended lamp life with ECO Mode™ technology increases lamp life up to 10,000 hours, while lowering power consumption
- Power management enables projector to automatically turn off when an incoming signal is not detected from any of the inputs
- Auto Power On via the RGB (15-pin) input connector when a signal is detected from a computer
- Carbon savings meter calculates the positive effects of operating the projector in ECO Mode, which is encouraged by an optional message at startup. A green ECO Mode button on the remote control makes the switch easy.
- Quick start (3 to 4 seconds) lets you begin presenting in seconds
- Sleep timer can be set to automatically turn off the projector at set countdown times
- Low power consumption (0.2W in stand-by mode) minimizes energy costs

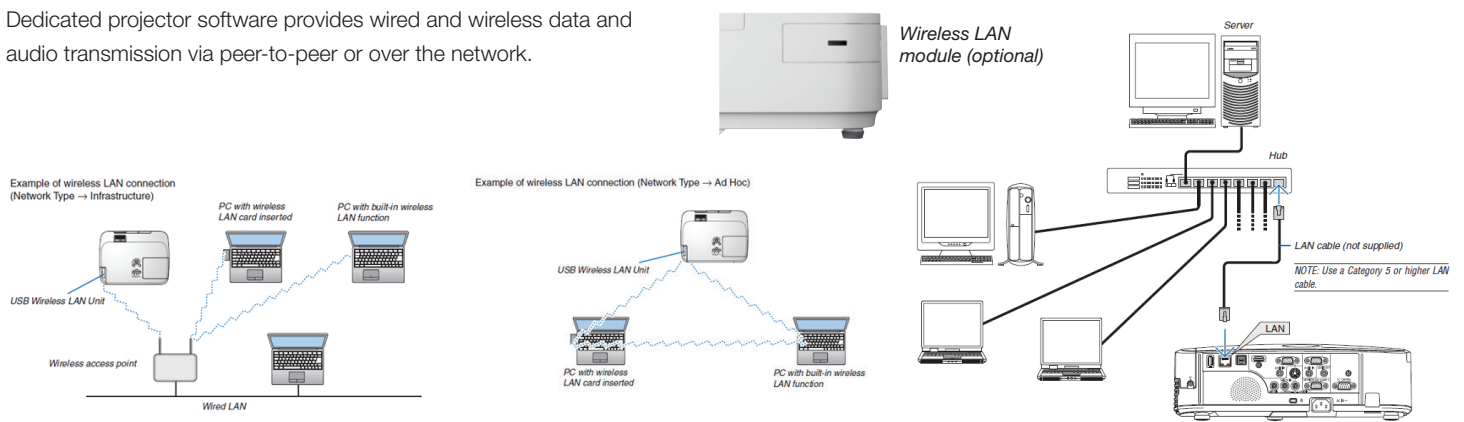
# High Performance Portable Projectors

## Advanced Networking Capabilities

- Integrated RJ45 connection for quick connection to the LAN (10/100 base-T capability)
- Remote diagnostics enable the user to monitor and make adjustments to the projector remotely
- PC CTL 4.0 controls the power switching input selection and other functions while managing lamp usage and a variety of other vital information over the network. Email notification and projector scheduling for better asset management is included with the software.
- PC CTL 5.0 for MAC users
- Control and receive important broadcast messages via Crestron Roomview™
- Wireless Image Utility (WIU) sends images directly from an iPad to the projector (requires wireless LAN module NP02LM1)
- Simple Access Point Sending photos and documents have never been easier from a computer or iPad.
- MultiPresenter enables up to 16 wireless devices to be connected to the projector simultaneously with access controlled by the moderator.

## Image Express Lite

Dedicated projector software provides wired and wireless data and audio transmission via peer-to-peer or over the network.



## Advanced ECO Mode

### ECO Mode

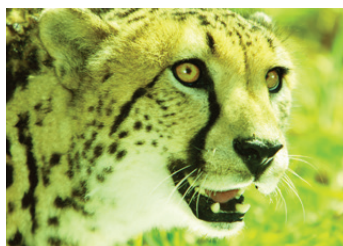
Lamp control selections with the ability to change power dependent on the ambient lighting conditions. With a built-in ambient light sensor, automatic adjustment of the projector's lamp provides unprecedented brightness control resulting in bright images for most environments. Automatically dim the image with the new Auto-dim feature to control the brightness of static images and extend lamp life. Constant brightness control prevents the usual drop in brightness over time while maximizing lamp life.

## Built-in wall color correction presets

These provide for adaptive color tone correction to display properly on non-white surfaces.



On a green wall...



BEFORE auto wall correction



AFTER auto wall correction

## 6500 Series Features

### Top cover lamp change

This feature provides for easy lamp changes without removal of the projector from the mount.



### Active lens cover

This cover enables presenters to immediately mute the audio and video, then seconds later lower the lamp brightness to 25% for a short period of time.



## Get Connected with a Wide Selection of Inputs

- Dual HDMI inputs (one MHL compatible) ensure quick switching between presentations
- Four audio inputs (mini-stereo, R/L RCA and 2 HDMI™) make it easy to add sound to enhance your presentations

### Remote control

Easy control from remote allows you to adjust lamp mode, aspect ratio, volume and image all with the touch of a button.



### Dual HDMI inputs

Among the 6500 Series' wide selection of inputs are 2 HDMI w/HDCP for connecting to high-definition sources such as Blu-ray players, cable boxes, satellite receivers and personal computers.



### Variable audio-out

This input enables the remote control to be used to adjust volume of self-powered external speakers that are connected to the projector. In stand-by mode, the audio-out stays active, allowing the last input used to pass to the self-powered external speakers.



### Full HD 3D video (144Hz)

When combined with active shutter glasses and 3D emitter, the 6500 Series Projectors create 3D images from a computer or Blu-ray player. The projectors utilize the 3D sync line output to connect to the 3D emitter. Optional 3D glasses and emitters by XPAND are available from DUKANE (X105-RF-X2 / AD025-RF-X1)



### USB Viewer

In instances when you'd prefer to leave your laptop behind for a presentation, 6500 Series projectors can deliver a solution. Using the presentation conversion software included with your projector, simply place your file onto a USB drive and plug it into the projector's USB port. This allows you to display images stored as .jpgs from optional USB



### USB input

Your connection options go even further with the 6500 Series. Connect your laptop or PC directly to the projector using the USB port and a standard USB cable.



		6540HDA	6532WA / 6536WA	6528A / 6532A / 6536A / 6540A
Projection System		Single DLP® (0.65")		Single DLP® (0.55")
Resolution		1920 x 1080 (1080p Full HD)		1024 x 768 (XGA)
Lens		Manual zoom (x1.7) / manual focus, F=2.4 - 3.1, f=17.09 - 29.05mm, throw ratio 1.2 - 2.04		Manual zoom (x1.7) / manual focus, F=2.4 - 3.2, f=18.0 - 30.6mm, throw ratio 1.5 - 2.55
Light source (lamp)	ECO mode	162W	135W / 150W	120W / 135W / 150W / 162W
	ECO mode off	270W	225W / 250W	200W / 225W / 250W / 270W
Lamp life	ECO mode	8,000 H	8,000 H	10,000 / 8,000 / 8,000 / 8,000 H
	ECO mode off	3,500 H	3,500 H	4,500 / 3,500 / 3,500 / 3,500 H
Image size		30 to 300 inches		30 to 300 inches
Light output	Normal	4,000 ANSI lumens		2,800 / 3,200 / 3,600 / 4,000 ANSI lumens
	ECO mode	Approximately 80% of normal		
Contrast ratio (white/black)		10,000:1		
Maximum resolution		Up to WUXGA (1920 x 1200)		
Synchronization range	Horizontal	15kHz to 100kHz (RGB: 24 kHz or over)		
	Vertical	50Hz to 120Hz (HDMI: 50 - 85Hz)		
Keystone correction	Horizontal	Manual: +/- 25 degrees		
	Vertical	Auto / manual: +/- 30 degrees		
Input terminals	Computer	Mini D-sub 15 pin x 1		
		Audio	Stereo mini jack x 1	
	Video	RCA x 1		
		Audio	(L/R) RCA x 1	
	HDMI	HDMI x 2 (HDMI 1 supports MHL function)		
	Microphone	Stereo mini jack, dynamic mic, condenser mic		
	3D Sync	Mini 3-pin		
USB Port	Type A	USB 2.0 (USB viewer) powered		
	Type B	USB display / mouse control		
Output terminals		Mini D-sub 15 pin x 1		
		Stereo mini jack x 1 (VAO)		
Wired LAN port		RJ45 (10 BASE-T / 100 BASE-TX) x 1		
Control terminals		D-Sub 9-pin x 1		
Built-in speaker		20W monaural		
Usage environment	Operational temperature	41 to 104 degrees Fahrenheit, 20 to 80% humidity (no condensation)		
	Storage temperature	14 to 122 degrees Fahrenheit, 20 to 80% humidity (no condensation)		
Power requirements		100-240 VAC 50/60Hz		
Input current		3.9 A to 1.9 A	3.6 A to 1.4 A	3.9 A to 1.5 A
Power consumption	ECO mode off	338W	283W / 316W	255W / 283W / 316W / 338W
	ECO mode	221W	186W/205W	170W/186W/205W/221W
	Standby (network)	0.5W or less		
	Standby (normal)	0.15W or less		
Net dimensions (W x H x D)		368 x 108 x 292mm (14.5" x 4.3" x 11.5")		
Weight		3.5kg / 7.7lbs		
Gross dimensions (W x D x H)		459 x 225 x 381mm (18.1" x 8.9" x 15.2")		
Gross weight		5.2kg / 11.5lbs		

## UNIQUE FEATURES

**BrilliantColor** advanced video processing from Texas Instruments delivers more vibrant and realistic colors and blacks rich in detail.

**DICOM Simulation** enables users in medical training environments to display accurate diagnostic images

**Advanced AccuBlend™** ensures detailed images when non-native resolution sources are connected to the projector

**Filter Free** with shielded engine eliminates the hassle and time spent monitoring and/or changing filters.

**Built-in closed captioning** enables decoding and display of text information from a video

**64-step image magnification** with location control

**Countdown sleep timer** can be set to automatically turn off the projector

## WARRANTY

Five (5) year limited warranty plus Dukane's 1 year Peace of Mind Loaner Program

## SHIPS WITH

Remote control, batteries, power cord, RGB signal cable, built-in lens cover, and product registration card

## ORDERING MODEL NUMBERS

6528A  
6532A  
6536A  
6540A  
6532WA  
6536WA  
6540HDA

## Accessories

<b>NP01MR</b>	IR receiver enables PJ remote to control PC and MAC functions
<b>NP05LM1</b>	802.11b/g/n wireless LAN adapter
<b>NP02GL</b>	Active shutter 3D glasses (PC only)
<b>456-6528</b>	Replaceable lamp for 6528A
<b>456-6532</b>	Replacement lamp for 6532A & 6532WA
<b>456-6536A</b>	Replacement lamp for 6536A & 6536WA
<b>456-6235W</b>	Replacement lamp for 6540A & 6540HDA
<b>X105-RF-X2</b>	XPAND RF 3D glasses
<b>AD025-RF-X1</b>	XPAND RF 3D emitter
<b>RMT-PJ36</b>	Replacement remote control
<b>PWRCRD-PJPX</b>	Power cable

Additional accessories are available, including screens, carts, mount accessories and replacement cables. Visit [www.dukaneav.com](http://www.dukaneav.com) for details.



## DUKANE CORPORATION

Audio Visual Products  
2900 Dukane Drive, St. Charles, IL 60174  
Toll-free: 888-245-1966 • Fax: 630-584-5156  
E-mail: [avsales@dukane.com](mailto:avsales@dukane.com)  
[www.dukaneav.com](http://www.dukaneav.com)

# DUKANE